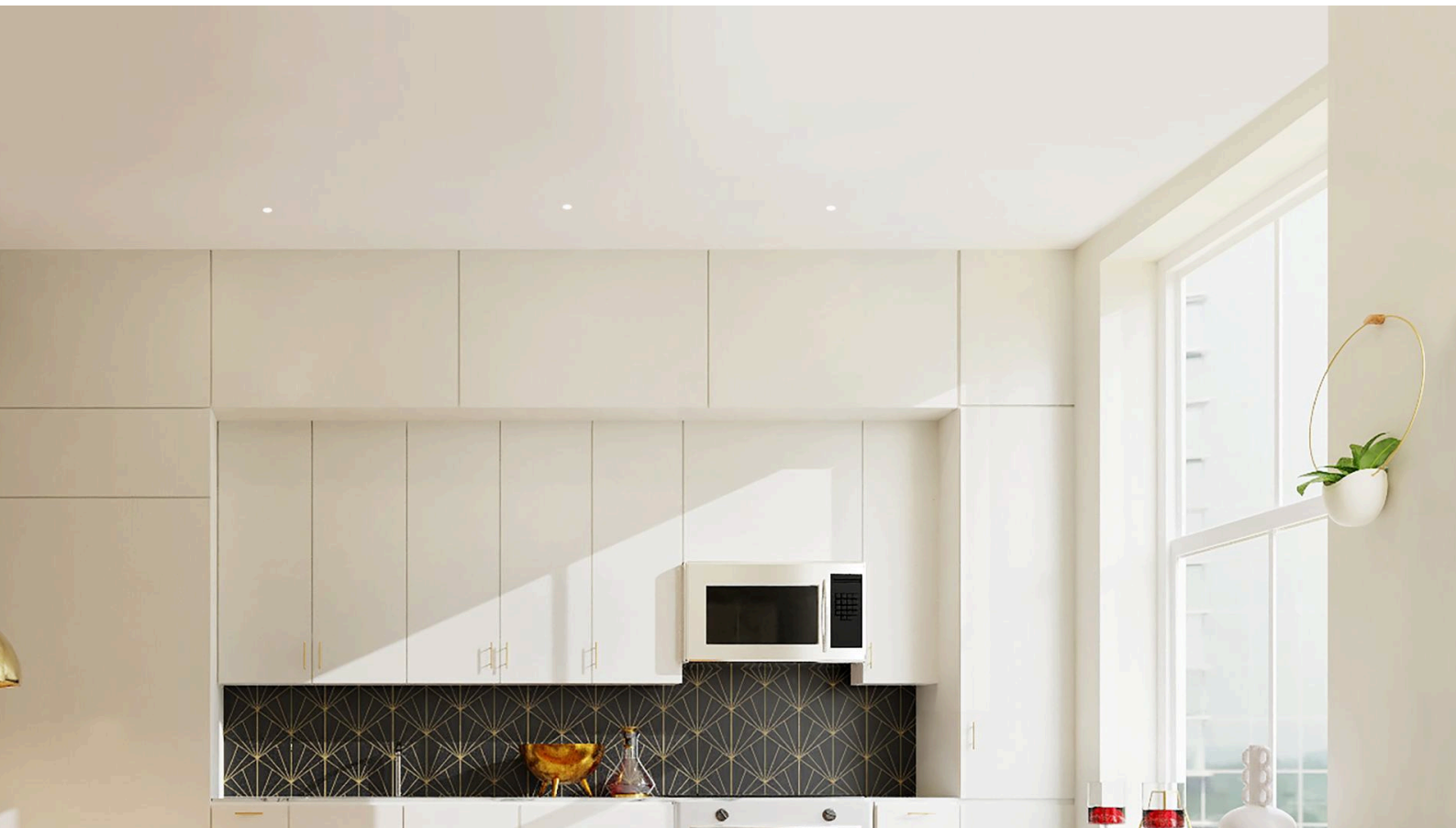
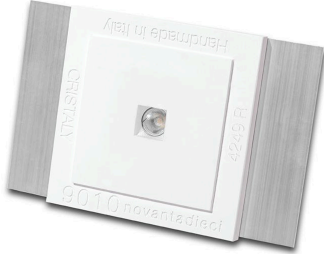




MINILED QUADRO (CEILING RECESSED)

The MINILED QUADRO is a sleek recessed LED lighting module that merges contemporary design with efficient, accent-ready illumination for refined interior environments. Its minimalist square form and compact profile offer seamless integration into ceilings with a clean, architectural presence. Crafted with quality materials and precise engineering, this fixture delivers smooth, glare-controlled light ideal for highlighting pathways, hallways, or feature areas. Perfect for both residential and commercial spaces, the 4249R elevates subtle lighting into a thoughtfully designed functional element.



	
PROJECT	
SPEC TYPE	
NOTES	

MATERIAL:

CRISTALY®

LIGHTING:

LED

VOLTAGE:

110-277V

FINISHING:

White / Paintable

DRIVER POSITION:

Remote

IP RATING:

IP20 / IP44

APPLIANCE CLASS:

III

DRIVER POSITION:

Remote

WEIGHT:

1.1 lb



WE WELCOME ALL CUSTOM ORDERS

Due to the dynamic nature of lighting products and the associated technologies, luminaire data on all specification sheets is subject to change at the discretion of Gordon Bullard LLC and associated companies.



Contact Us:

sales@gordonbullard.com

www.byiba.com

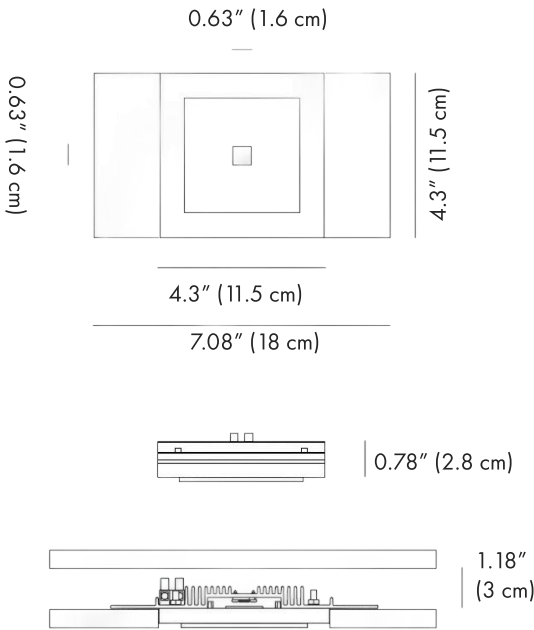
1 877-964-4646

BY-4249R-9010-
L1-B20-K27-DIM

HOW TO ORDER:

Example:

CODE: BY-4249R-9010-L1-B20-K27-DIM



1 DIMENSIONS:

Height - H: 4.3" (11.5 cm)
 Length - L: 4.3" (11.5 cm)
 Depth - P: 0.78" (2.8 cm)
 Square - h x l: 0.63"(1.6 cm) x 0.63"(1.6 cm)

2 LIGHT SOURCE:

- L1 LED / 4W / 110-277V / CRI 90
- L2 LED / 6W / 110-277V / CRI 90
- L3 LED / 8.5W / 110-277V / CRI 90
- L4 LED / 11W / 110-277V / CRI 90

3 BEAM ANGLE :

- B20 20°
- B30 30°
- B40 40°
- B50 50°

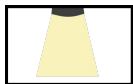
4 CCT&LUMENS:

- | | | |
|---------|-----------------|----------------|
| -K27 | 2700K = 450 lm | } FOR L1 MODEL |
| -K30 | 3000K = 480 lm | |
| -K40 | 4000K = 510 lm | |
| -KK27 | 2700K = 630 lm | } FOR L2 MODEL |
| -KK30 | 3000K = 660 lm | |
| -KK40 | 4000K = 690 lm | |
| -KKK27 | 2700K = 820 lm | } FOR L3 MODEL |
| -KKK30 | 3000K = 850 lm | |
| -KKK40 | 4000K = 880 lm | |
| -KKKK27 | 2700K = 1020 lm | } FOR L4 MODEL |
| -KKKK30 | 3000K = 1050 lm | |
| -KKKK40 | 4000K = 1080 lm | |

PROJECT

SPEC TYPE

NOTES



WE WELCOME ALL CUSTOM ORDERS

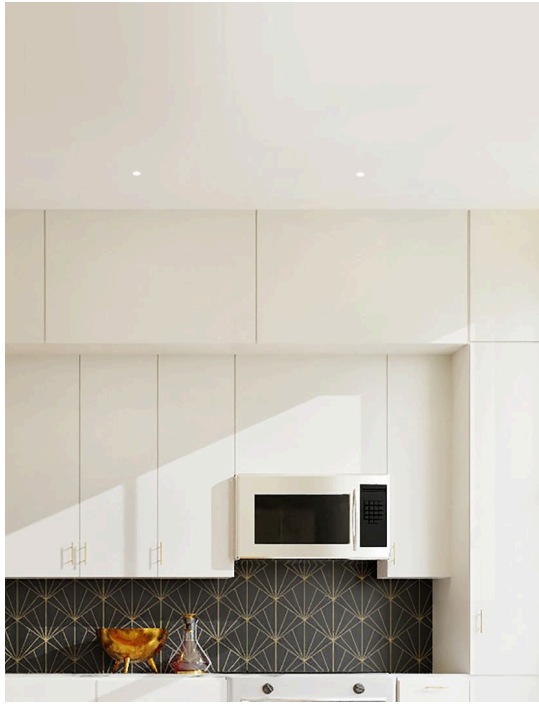
Due to the dynamic nature of lighting products and the associated technologies, luminaire data on all specification sheets is subject to change at the discretion of Gordon Bullard LLC and associated companies.

Contact Us:

sales@gordonbullard.com

www.byiba.com

1 877-964-4646



HOW TO ORDER:

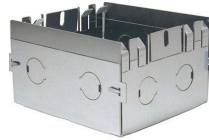
Example:
CODE: BY-4249R-9010-L1-B20-K27-DIM

BY-4249R-9010-
L1-B20-K27-DIM

5 DIMMING OPTIONS:

- DIM 0-10V
- DALI DALI
- LT Lutron
- CS Casambi
- WF WI-FI
- NON Non-Dimmable

6 ACCESSORIES:

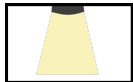


Housing Box
7.3" × 4.7" × 1.7"
8.5" × 5.9" × 2.2" - Hole

PROJECT

SPEC TYPE

NOTES



WE WELCOME ALL CUSTOM ORDERS

Due to the dynamic nature of lighting products and the associated technologies, luminaire data on all specification sheets is subject to change at the discretion of Gordon Bullard LLC and associated companies.