

# MINILED QUADRO

INSTALLATION TYPE:  
CEILING RECESSED





MINILED 4247R	MINILED ROUND 4248R	MINILED QUADRO 4249R	MINILED SQUARE 4250R	MINILED DOR 4248S	MINILED DOQ 4249S
LED MAX 11W	LED MAX 11W	LED MAX 11W	LED MAX 11W	LED MAX 2x8,5W	LED MAX 2x8,5W
CL					
DC / AC	DC	DC	DC	DC	DC
MAX 900mA C.C. 11,5V	MAX 900mA C.C. 11,5V	MAX 900mA C.C. 11,5V	MAX 900mA C.C. 11,5V	MAX 700mA C.C. 23V	MAX 700mA C.C. 23V
IP44 / IP20	IP44 / IP20	IP44 / IP20	IP44 / IP20	IP44 / IP20	IP44 / IP20
Lb 1.10	1.10	1.10	1.10	1.76	1.76

MINILED COLLI 4254A	MINILED MONTI 4254B	MINILED CILLI 4254C	MINILED DIAGO 4247Z	MICROLED 4247G	MICROLED ROUND 4248G
LED MAX 11W	LED MAX 11W	LED MAX 11W	LED MAX 11W	LED MAX 4W	LED MAX 4W
CL					
DC / AC	DC	DC	DC	DC	DC
MAX 900mA C.C. 11,5V	MAX 900mA C.C. 11,5V	MAX 900mA C.C. 11,5V	MAX 900mA C.C. 11,5V	MAX 1400mA C.C. 3V	MAX 1400mA C.C. 3V
IP44 / IP20	IP44 / IP20	IP44 / IP20	IP44 / IP20	IP44 / IP20	IP44 / IP20
Lb 0.99	1.01	0.97	0.88	0.51	0.51

x1 - 4247R/4248R/4249R/4250R  
4254A/4254B/4254C/4247Z  
4247G/4248G  
x2 - 4248S/4249S

* ART.		
4247R / 4248R / 4249R 4250R / 4254A / 4254B 4254C / 4247Z	12.0x12.0 cm	3.0 cm
4248S / 4249S	12.0x20.0 cm	3.0 cm
4247G / 4248G	9.5x9.5 cm	3.0 cm

**A**

Remote Driver  
NOT Included

**ALWAYS REMOVE THE BLACK PROTECTION BEFORE SWITCHING ON THE SPOTLIGHT.**

**OFF**

**OFF**

THE DRIVER MUST BE TURNED OFF.  
WAIT AT LEAST 20 MINUTES AFTER TURNING IT OFF BEFORE MAKING THE ELECTRICAL CONNECTION.

REMOVE THE PROTECTION

**ON-OFF/DIM TEST**

\*DO NOT TURN ON WITH PAINT COVER ON

**OFF ON**

**4247R-4248R-4249R-4250R-4254A  
4254B-4254C-4247Z-4247G-4248G**

AFTER SWITCHING OFF THE SPOTLIGHT  
REPOSITION THE PROTECTION

X2

TEKS POINT SELF DRILLING SCREW  
Ø 0.35

**4248S-4249S**

AFTER SWITCHING OFF THE SPOTLIGHT  
REPOSITION THE PROTECTION

X2

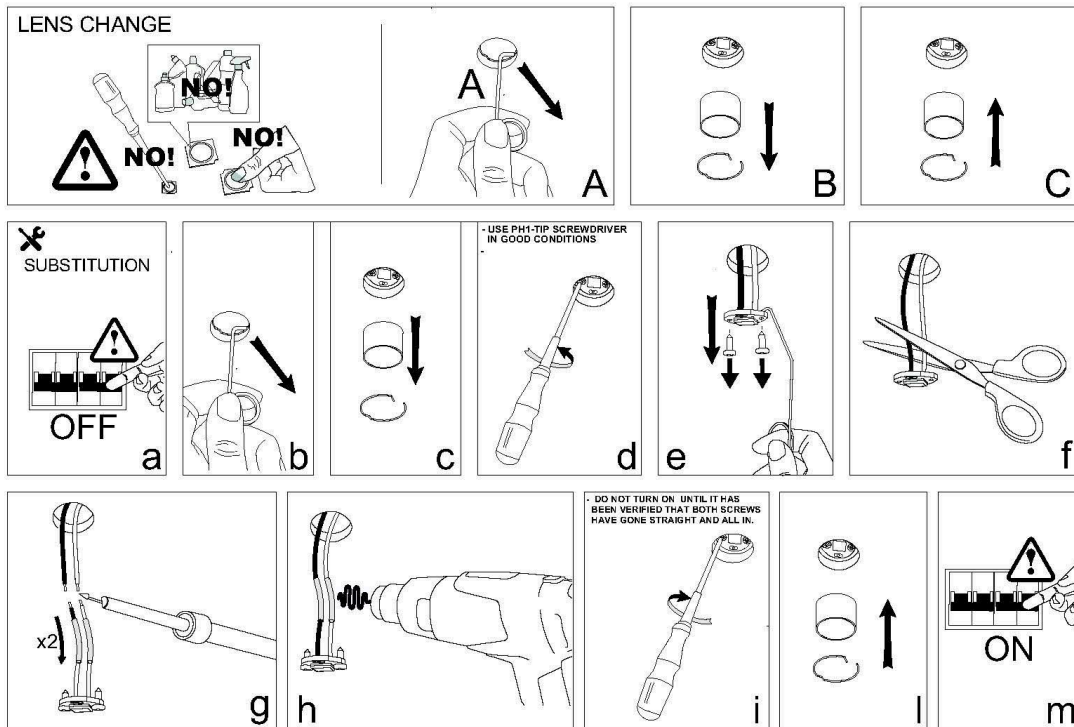
TEKS POINT SELF DRILLING SCREW  
Ø 0.35

REMOVE THE PROTECTION

sales@gordonbullard.com  
www.byiba.com  
1 877-964-4646



991 South Gull Lake Dr.  
Richland, MI 49083  
USA





**IMPORTANT**

To ensure equipment safety you must carefully follow the instructions below. This leaflet must be kept handy by personnel entrusted with all ordinary and extraordinary maintenance.

- Before any installation or maintenance operation on the bulb, make sure it is disconnected from power
- Fit the correct bulbs, according to the type and power indicated on the lamp data label.
- Make sure the lamp technical features are compatible with the use you are going to make of it.
- Should you have any doubt, refer to the dealer or ask an electrician.
- When connecting to the mains, follow the correct colour code for power cables: (N) blue, (L) brown or black and, only for class I equipment, (T) yellow/green.
- When lamps are to be fitted to the wall directly through their ceramic parts, fasten the fixing screws lightly, to avoid breaking the ceramic.
- To clean the lamp on the outside, use a soft cloth, possibly wet. Do not use solvents or abrasive products. No liquid must get in contact with the lamp interior parts.
- Do not touch the equipment with dirty hands.



= Class I equipment, must be connected to an earth terminal.



= Double insulated lamp, does not need earthing.



= Electrical equipment in class III, electrical safety guaranteed by low voltage tension, does not require grounding



= Minimum distance to be observed from all lit up objects.



= Replace immediately the safety glass, if damaged, with the original part.



= The lamp uses low pressure bulbs, and needs no protection glass.



= The equipment at the end of its life must be collected separately from other waste.