



MINILED LINE

INSTALLATION TYPE:
CEILING RECESSED



i	MINILED LINE 4253A	MINILED DOL 4253B
LED	LED MAX 6W	LED MAX 2x6W
CL		
DC / AC	DC MAX 500mA C.C. 11.5V	DC MAX 500mA C.C. 23V
IP	IP44 / IP20	IP44 / IP20
Lb	1.10	1.57



x1 - 4253A
x2 - 4253B

x1

A

* ART.		
MINILED LINE 4253A	12.0x12.0 cm	3.0 cm
MINILED DOL 4248B	12.0x20.0 cm	3.0 cm

B

Remote Driver
NOT Included

OFF

OFF

THE DRIVER MUST BE TURNED OFF.
WAIT AT LEAST 30 MINUTES AFTER TURNING IT
OFF BEFORE MAKING THE ELECTRICAL CONNECTION.

DO NOT REMOVE THE PROTECTION

ON-OFF/DIM TEST
DO NOT LEAVE SWITCHED ON FOR MORE THAN
5 MINUTES WITH THE PROTECTION

OFF ON

4253A

X2

TEKS POINT SELF DRILLING SCREW
Ø 0.35

4253B

X2

TEKS POINT SELF DRILLING SCREW
Ø 0.35

NO

OK

REMOVE THE PROTECTION

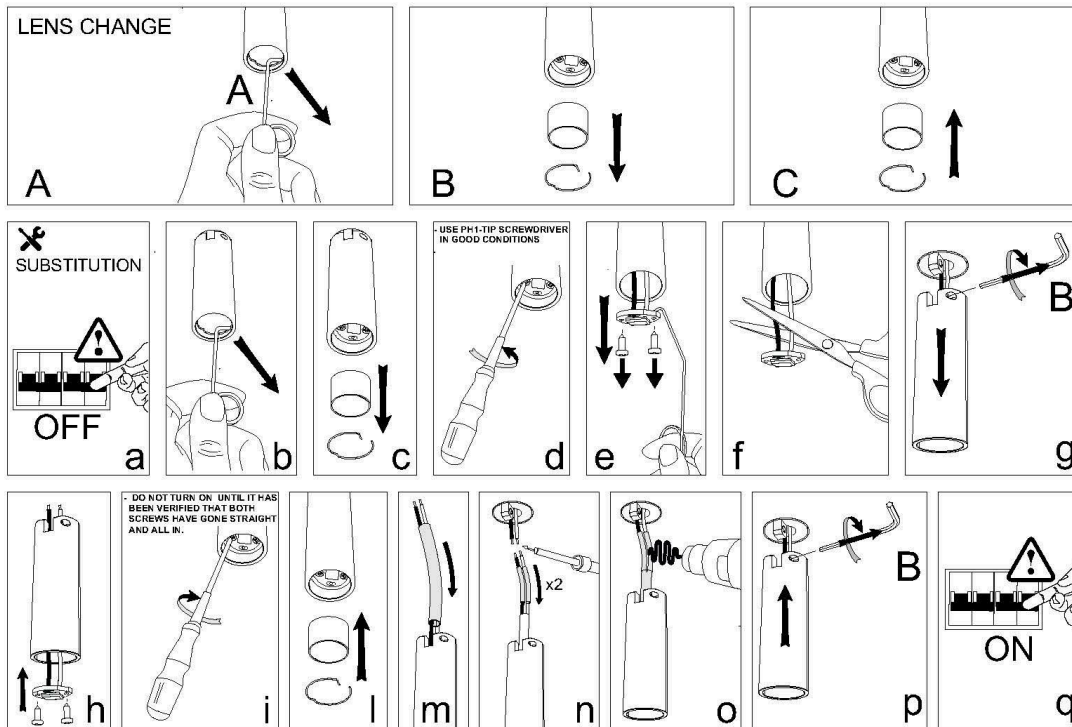
HOT

NO!

360°

90°

B





IMPORTANT

To ensure equipment safety you must carefully follow the instructions below. This leaflet must be kept handy by personnel entrusted with all ordinary and extraordinary maintenance.

- Before any installation or maintenance operation on the bulb, make sure it is disconnected from power
- Fit the correct bulbs, according to the type and power indicated on the lamp data label.
- Make sure the lamp technical features are compatible with the use you are going to make of it.
- Should you have any doubt, refer to the dealer or ask an electrician.
- When connecting to the mains, follow the correct colour code for power cables: (N) blue, (L) brown or black and, only for class I equipment, (T) yellow/green.
- When lamps are to be fitted to the wall directly through their ceramic parts, fasten the fixing screws lightly, to avoid breaking the ceramic.
- To clean the lamp on the outside, use a soft cloth, possibly wet. Do not use solvents or abrasive products. No liquid must get in contact with the lamp interior parts.
- Do not touch the equipment with dirty hands.



= Class I equipment, must be connected to an earth terminal.



= Double insulated lamp, does not need earthing.



= Electrical equipment in class III, electrical safety guaranteed by low voltage tension, does not require grounding



= Minimum distance to be observed from all lit up objects.



= Replace immediately the safety glass, if damaged, with the original part.



= The lamp uses low pressure bulbs, and needs no protection glass.



= The equipment at the end of its life must be collected separately from other waste.