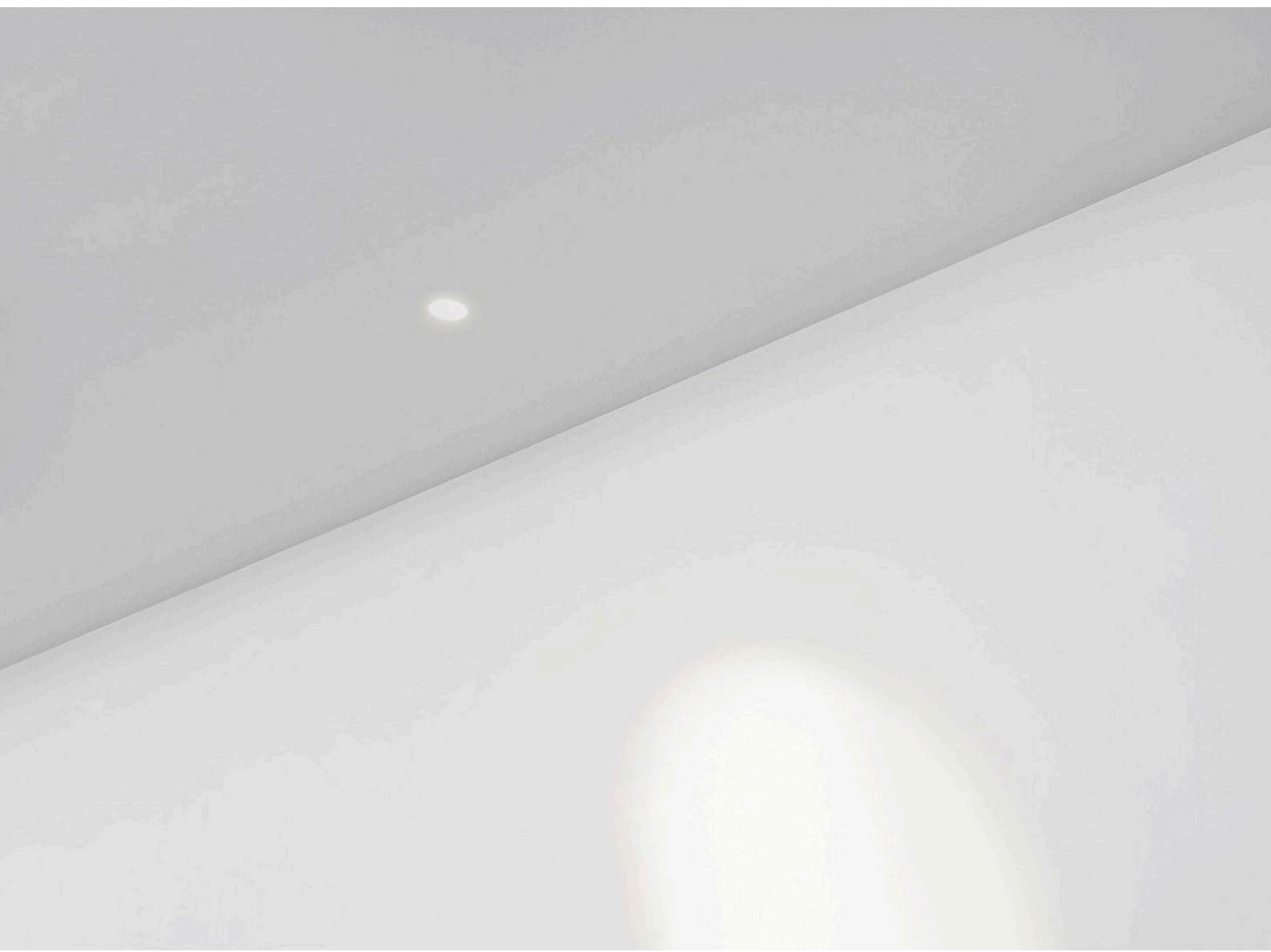
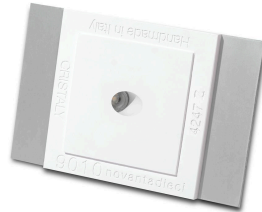




## MINILED DIAGO (CEILING RECESSED)

The MINILED DIAGO recessed light is an Italian-designed architectural fixture that delivers precise, expressive illumination with a refined minimalist appearance. Its diagonal light emission creates a distinctive visual effect while allowing flexible control of light direction and atmosphere. Designed for both ceilings and walls, it integrates seamlessly into modern interiors and accent lighting schemes. Made from high-quality materials with excellent durability and finish, it combines advanced LED technology with elegant design.





**MATERIAL:**

CRISTALY®

**LIGHTING:**

LED

**VOLTAGE:**

110-277V

**FINISHING:**

White / Paintable

**DRIVER POSITION:**

Remote

**IP RATING:**

IP20 / IP44

**APPLIANCE CLASS:**

III

**DRIVER POSITION:**

Remote

**WEIGHT:**

1.76 lb

PROJECT

SPEC TYPE

NOTES



WE WELCOME ALL CUSTOM ORDERS

Due to the dynamic nature of lighting products and the associated technologies, luminaire data on all specification sheets is subject to change at the discretion of Gordon Bullard LLC and associated companies.

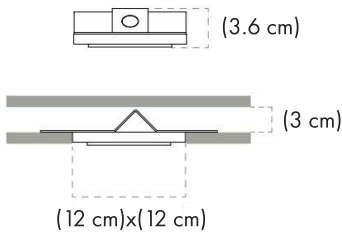
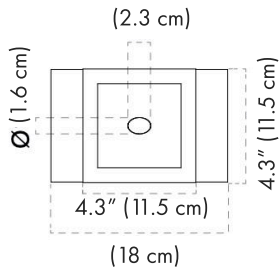


Contact Us:

sales@gordonbullard.com

www.byiba.com

1 877-964-4646



**HOW TO ORDER:**

Example:

CODE: BY-4247Z-9010-L1-B20-K27-DIM

BY-4247Z-9010-  
L1-B20-K27-DIM

**1 DIMENSIONS:**

Height - H: 4.3" (11.5 cm)  
 Length - L: 7.09" (18 cm)  
 Depth - P: 1.18" (3 cm)  
 Diameter - Ø: 0.39" (1.6 cm)

**2 LIGHT SOURCE:**

-L1 LED / 4W / 110-277V / CRI 90  
 -L2 LED / 6W / 110-277V / CRI 90  
 -L3 LED / 8.5W / 110-277V / CRI 90  
 -L4 LED / 11W / 110-277V / CRI 90

**3 BEAM ANGLE :**

-B20 20°  
 -B30 30°  
 -B40 40°  
 -B50 50°

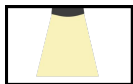
**4 CCT&LUMENS:**

-K27	2700K = 450 lm	} FOR L1 MODEL
-K30	3000K = 480 lm	
-K40	4000K = 510 lm	
-KK27	2700K = 630 lm	} FOR L2 MODEL
-KK30	3000K = 660 lm	
-KK40	4000K = 690 lm	
-KKK27	2700K = 820 lm	} FOR L3 MODEL
-KKK30	3000K = 850 lm	
-KKK40	4000K = 880 lm	
-KKKK27	2700K = 1020 lm	} FOR L4 MODEL
-KKKK30	3000K = 1050 lm	
-KKKK40	4000K = 1080 lm	

PROJECT

SPEC TYPE

NOTES



WE WELCOME ALL CUSTOM ORDERS

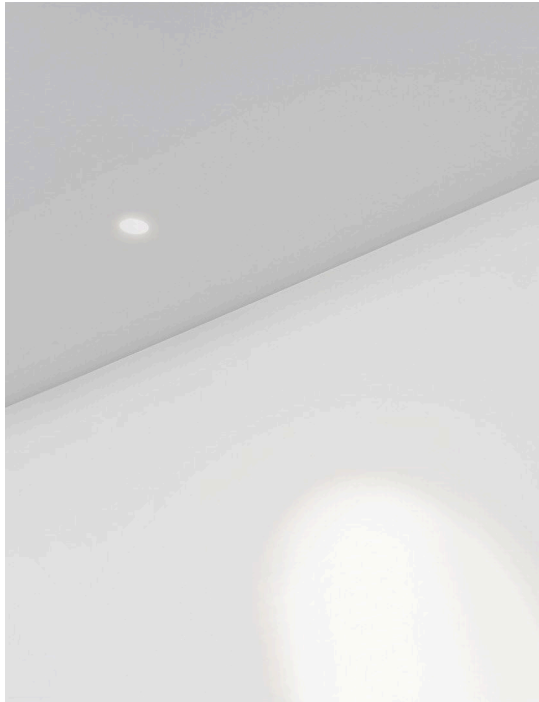
Due to the dynamic nature of lighting products and the associated technologies, luminaire data on all specification sheets is subject to change at the discretion of Gordon Bullard LLC and associated companies.

Contact Us:

sales@gordonbullard.com

www.byiba.com

1 877-964-4646



**HOW TO ORDER:**

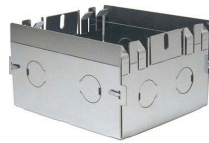
Example:  
CODE: BY-4247Z-9010-L1-B20-K27-DIM

BY-4247Z-9010-  
L1-B20-K27-DIM

**5 DIMMING OPTIONS:**

- DIM      0-10V
- DALI     DALI
- LT        Lutron
- CS        Casambi
- WF        WI-FI
- NON      Non-Dimmable

**6 ACCESSORIES:**

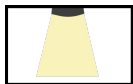


Housing Box  
7.28" × 4.72" × 1.77"  
8.46" × 5.91" × 2.17" - Hole

PROJECT

SPEC TYPE

NOTES



**WE WELCOME ALL CUSTOM ORDERS**

Due to the dynamic nature of lighting products and the associated technologies, luminaire data on all specification sheets is subject to change at the discretion of Gordon Bullard LLC and associated companies.