



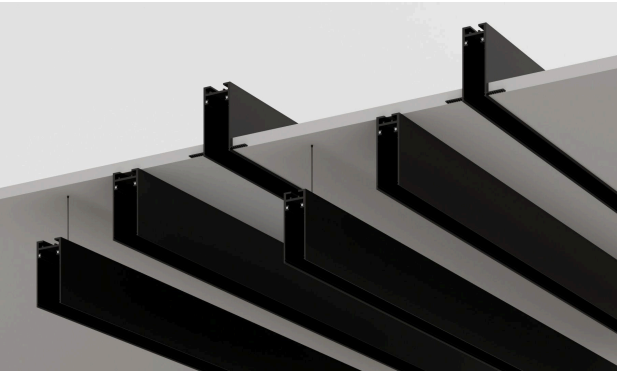
## BYIBA LINEAR MINI (magnetic track system)

BY-BLMN-VND

PROJECT

SPEC TYPE

NOTES



Surface- Mounted / Recessed / Suspension



GENERAL INFORMATION:

The BYIBA LINEAR MINI (Mini Version) is a versatile magnetic track lighting system designed to bring flexibility and elegance to modern interiors. Built from high-quality aluminum with refined finishing options —Black, White, Bronze, or Gold—it adapts seamlessly to diverse architectural styles. This system offers multiple installation types, including surface-mounted, recessed, and suspension setups, making it suitable for residential, commercial, and hospitality applications. The LED-powered track ensures efficient, long-lasting illumination, while the magnetic connection provides effortless repositioning and customization of fixtures.

MATERIAL:

Aluminum

FINISHING:

Black / White / Bronze / Gold

LIGHTING:

LED

INPUT VOLTAGE:

24VDC

IP RATING:

20

MAXIMUM POWER:

200W

CONNECTION:

Terminal

INSTALLATION TYPE:

Surface / Suspended / Recessed

APPLIANCE CLASS:

I

WWW.BYIBA.COM

- TECHNICAL
- OUTDOOR
- DECORATIVE



WE WELCOME ALL CUSTOM ORDERS

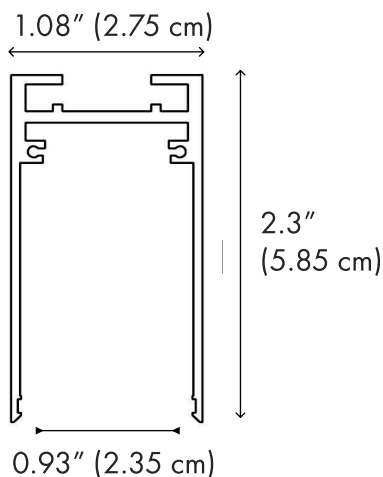
CONTACT US:

[sales@gordonbullard.com](mailto:sales@gordonbullard.com)  
[www.byiba.com](http://www.byiba.com)  
 1 877-964-4646

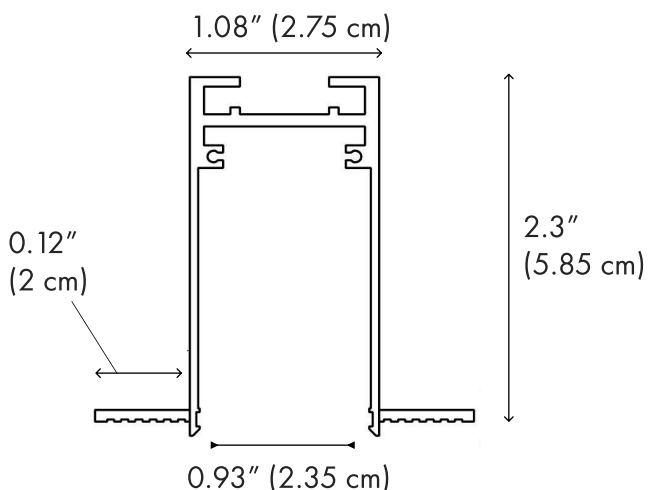
PROJECT

SPEC TYPE

NOTES



Surface-Mounted / Suspended



Recessed



### HOW TO ORDER:

Example:

CODE FOR TRACK: BY-BLMN-VND-S-L1-BL-BR

CODE FOR HEAD: F20S-K30-C80-WL-DIM

CODE FOR ACCESSORIES: 45D-CC-OCR-OCR-TC-IC-WH

CODE:

BY-BLMN-  
VND-S-L1-BL-  
BR

### 1 INSTALLATION TYPE:

- S Suspension
- R Recessed
- SM Surface-Mounted

### 2 PROFILE DIMENSIONS:

Width - W: 1.08" (2.75 cm)

Height - H: 2.3" (5.85 cm)

### 3 LENGHT:

- L1 C) Lenght - L: 39,37" (100 cm)
- L2 C) Lenght - L: 78,74" (200 cm)
- L3 C) Lenght - L: 118,11" (300 cm)

### 4 TRACK FINISH OPTIONS:

- BL Black
- BR Bronze
- WH White
- GL Gold

### 5 CANOPY FINISH OPTIONS: (for suspension version)

- BL Black
- BR Bronze
- WH White
- GL Gold

WWW.BYIBA.COM

TECHNICAL

OUTDOOR

DECORATIVE



WE WELCOME ALL CUSTOM ORDERS

CONTACT US:

sales@gordonbullard.com

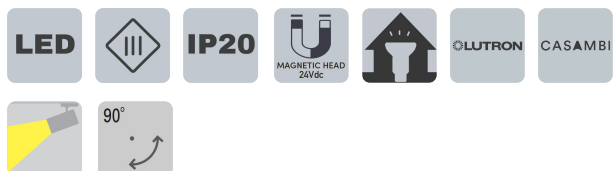
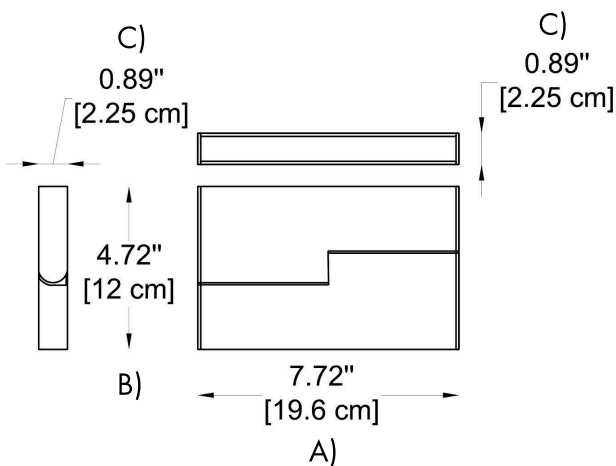
www.byiba.com

1 877-964-4646

PROJECT

SPEC TYPE

NOTES



### HOW TO ORDER:

Example:

CODE FOR TRACK: BY-BLMN-VND-S-L1-BL-BR

CODE FOR HEAD: F20S-K30-C80-WL-DIM

CODE FOR ACCESSORIES: 45D-CC-OCR-OCR-TC-IC-WH

CODE:

F20S-K30-  
C80-WL-  
DIM

6

CHOOSE TRACK HEAD:

### GENERAL INFORMATION

CODE - **-F20S**

Dimensions: A) Length - 7.72" (19.6 cm)  
B) Height - 4.72" (12 cm)  
C) Width - 0.89" (2.25 cm)

Material: Aluminum  
Light Source: LED / 15W / 808 lm / 24Vdc  
Lighting type: Direct  
Lighting distribution: Symmetric  
Optical type: Diffuse  
Dimmable: Yes  
Driver: Remote  
Driver type: Electronic  
Emergency: Without  
Insulation class: III

CCT: **-K27** 2700K  
**-K30** - 3000K  
**-K40** - 4000K  
**-K50** - 5000K

CRI: **-C80** - 80  
**-C90** - 90

Finish Options: **-WL** - White (RAL9003)  
**-BL** - Black (RAL9005)  
**-CUS** Custom on request\*

Dimming Options: **-DIM** - 0-10V  
**-DL** - DALI  
**-TR** TRIAC  
**-LT** - Lutron  
**-CS** - Casambi

Operating temperature range - -4°F to +104°F  
Maintenance of lumen - L80 - 50,000 hours at 77°F

[WWW.BULLARDCOLLECTION.COM](http://WWW.BULLARDCOLLECTION.COM)

TECHNICAL

OUTDOOR

DECORATIVE



WE WELCOME ALL CUSTOM ORDERS

CONTACT US:

[sales@gordonbullard.com](mailto:sales@gordonbullard.com)

[www.byiba.com](http://www.byiba.com)

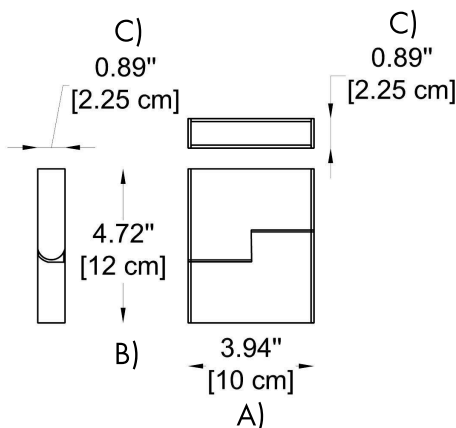
1 877-964-4646



PROJECT

SPEC TYPE

NOTES



LED



IP20



### HOW TO ORDER:

Example:

CODE FOR TRACK: BY-BLMN-VND-S-L1-BL-BR

CODE FOR HEAD: F20S-K30-C80-WL-DIM

CODE FOR ACCESSORIES: 45D-CC-OCR-OCR-TC-IC-WH

CODE:

F20S-K30-  
C80-WL-  
DIM

6

### CHOOSE TRACK HEAD:

#### GENERAL INFORMATION

CODE -

-F10S

Dimensions:

A) Length - 3.94" (10 cm)

B) Height - 4.72" (12 cm)

C) Width - 0.89" (2.25 cm)

Material:

Aluminum

Light Source:

LED / 8W / 481 lm / 24Vdc

Lighting type:

Direct

Lighting distribution:

Symmetric

Optical type:

Diffuse

Dimmable:

Yes

Driver:

Remote

Driver type:

Electronic

Emergency:

Without

Insulation class:

III

CCT:

-K27 2700K

-K30 3000K

-K40 4000K

-K50 5000K

CRI:

-C80 80

-C90 90

Finish Options:

-WL - White (RAL9003)

-BL - Black (RAL9005)

-CUS Custom on request\*

Dimming Options:

-DIM - 0-10V

-DL - DALI

-TR TRIAC

-LT - Lutron

-CS - Casambi

Operating temperature range - -4°F to +104°F

Maintenance of lumen - L80 - 50,000 hours at 77°F

WWW.BULLARDCOLLECTION.COM

TECHNICAL

OUTDOOR

DECORATIVE



WE WELCOME ALL CUSTOM ORDERS

CONTACT US:

sales@gordonbullard.com

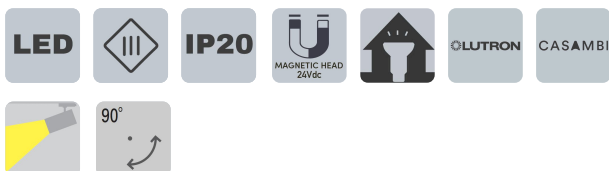
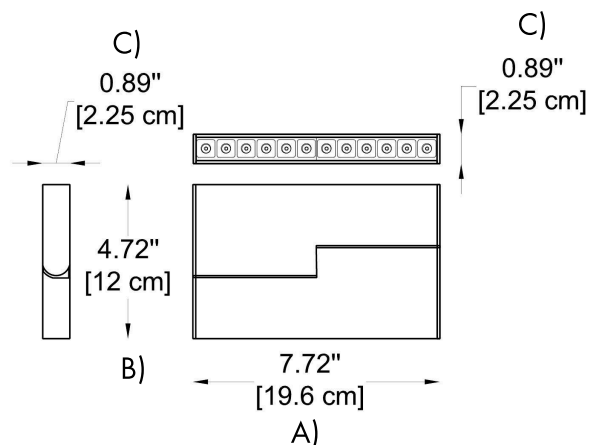
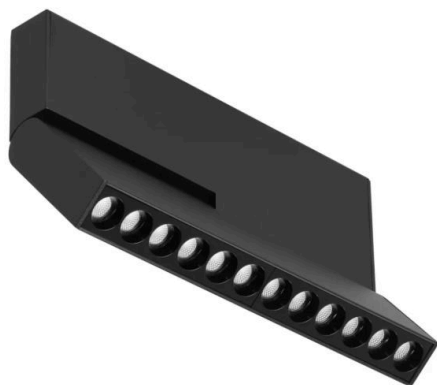
www.byiba.com

1 877-964-4646

PROJECT

SPEC TYPE

NOTES



### HOW TO ORDER:

Example:

CODE FOR TRACK: BY-BLMN-VND-S-L1-BL-BR

CODE FOR HEAD: F20S-K30-C80-WL-DIM

CODE FOR ACCESSORIES: 45D-CC-OCR-OCR-TC-IC-WH

CODE:

F20S-K30-  
C80-WL-  
DIM

6

### CHOOSE TRACK HEAD:

#### GENERAL INFORMATION

CODE -

-F12S

Dimensions:

A) Length - 7.72" (19.6 cm)

B) Height - 4.72" (12 cm)

C) Width - 0.89" (2.25 cm)

Material:

Aluminum

Light Source:

LED / 16W / 1000 lm / 24Vdc

Lighting type:

Direct

Lighting distribution:

Symmetric

Optical type:

Spot

Dimmable:

Yes

Driver:

Remote

Driver type:

Electronic

Emergency:

Without

Insulation class:

III

Beam Angle:

-B12 - 12°

-B34 - 34°

-B48 - 48°

CCT:

-K27 2700K

-K30 3000K

-K40 4000K

-K50 5000K

CRI:

-C80 - 80

-C90 - 90

Finish Options:

-WL - White (RAL9003)

-BL - Black (RAL9005)

-CUS Custom on request\*

Dimming Options:

-DIM - 0-10V

-DL - DALI

-TR TRIAC

-LT - Lutron

-CS - Casambi

Operating temperature range - -20 to +40°C

Maintenance of lumen - L80 - 50 000 hours at 25 °C

[WWW.BULLARDCOLLECTION.COM](http://WWW.BULLARDCOLLECTION.COM)

TECHNICAL

OUTDOOR

DECORATIVE



WE WELCOME ALL CUSTOM ORDERS

CONTACT US:

[sales@gordonbullard.com](mailto:sales@gordonbullard.com)

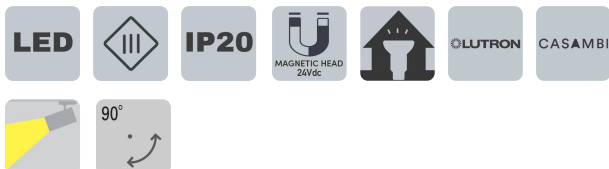
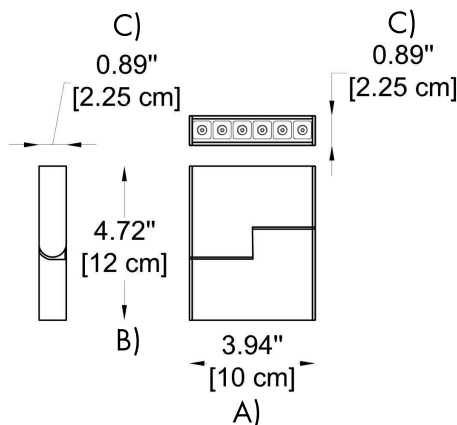
[www.byiba.com](http://www.byiba.com)

1 877-964-4646

PROJECT

SPEC TYPE

NOTES



### HOW TO ORDER:

Example:

CODE FOR TRACK: BY-BLMN-VND-S-L1-BL-BR

CODE FOR HEAD: F20S-K30-C80-WL-DIM

CODE FOR ACCESSORIES: 45D-CC-OCR-OCR-TC-IC-WH

CODE:

F20S-K30-  
C80-WL-  
DIM

6

### CHOOSE TRACK HEAD:

#### GENERAL INFORMATION

CODE -

-F12S

Dimensions:

A) Length - 3.94" (10 cm)

B) Height - 4.72" (12 cm)

C) Width - 0.89" (2.25 cm)

Material:

Aluminum

Light Source:

LED / 8W / 511 lm / 24Vdc

Lighting type:

Direct

Lighting distribution:

Symmetric

Optical type:

Spot

Dimmable:

Yes

Driver:

Remote

Driver type:

Electronic

Emergency:

Without

Insulation class:

III

Beam Angle:

-B18 - 18°

-B34 - 34°

-B48 - 48°

CCT:

-K27 2700K

-K30 3000K

-K40 4000K

-K50 5000K

CRI:

-C80 - 80

-C90 - 90

Finish Options:

-WL - White (RAL9003)

-BL - Black (RAL9005)

-CUS Custom on request\*

Dimming Options:

-DIM - 0-10V

-DL - DALI

-TR TRIAC

-LT - Lutron

-CS - Casambi

Operating temperature range - -20 to +40°C

Maintenance of lumen - L80 - 50 000 hours at 25 °C

[WWW.BULLARDCOLLECTION.COM](http://WWW.BULLARDCOLLECTION.COM)

TECHNICAL

OUTDOOR

DECORATIVE



WE WELCOME ALL CUSTOM ORDERS

CONTACT US:

[sales@gordonbullard.com](mailto:sales@gordonbullard.com)

[www.byiba.com](http://www.byiba.com)

1 877-964-4646

PROJECT

SPEC TYPE

NOTES

### HOW TO ORDER:

CODE:

Example:

CODE FOR TRACK: BY-BLMN-VND-S-L1-BL-BR

CODE FOR HEAD: F20S-K30-C80-WL-DIM

CODE FOR ACCESSORIES: 45D-CC-OCR-OCR-TC-IC-WH

F20S-K30-  
C80-WL-  
DIM

### 6 CHOOSE TRACK HEAD:

#### GENERAL INFORMATION

<b>CODE -</b>	<b>-D24S</b>
Dimensions:	A) Length - 15.28" (38.8 cm)
	B) Height - 1.65" (4.2 cm)
	C) Width - 0.89" (2.25 cm)

Material:	Aluminum
Light Source:	LED / 24W / 1920 lm / 24Vdc
Lighting type:	Direct
Lighting distribution:	Symmetric
Optical type:	Spot
Dimmable:	Yes
Driver:	Remote
Driver type:	Electronic
Emergency:	Without
Insulation class:	III

Beam Angle:	<b>-B12</b> - 12°
	<b>-B34</b> - 34°
	<b>-B48</b> - 48°

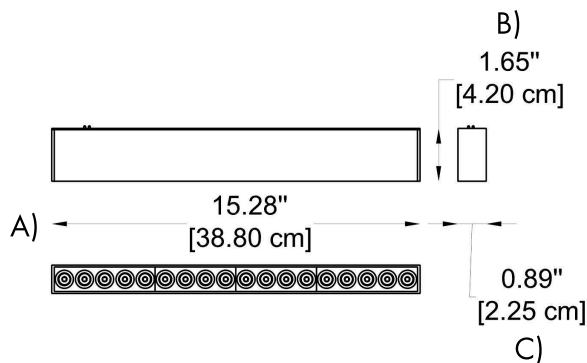
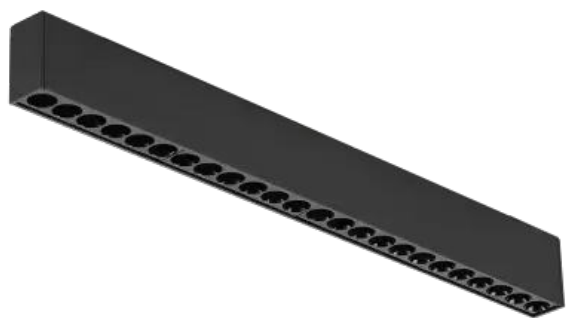
CCT:	<b>-K27</b> 2700K
	<b>-K30</b> 3000K
	<b>-K40</b> 4000K
	<b>-K50</b> 5000K

CRI:	<b>-C80</b> - 80
	<b>-C90</b> - 90

Finish Options:	<b>-WL</b> - White (RAL9003)
	<b>-BL</b> - Black (RAL9005)
	<b>-CUS</b> Custom on request*

Dimming Options:	<b>-DIM</b> - 0-10V
	<b>-DL</b> - DALI
	<b>-TR</b> TRIAC
	<b>-LT</b> - Lutron
	<b>-CS</b> - Casambi

Operating temperature range - -20 to +40°C  
Maintenance of lumen - L80 - 50 000 hours at 25 °C



WWW.BULLARDCOLLECTION.COM

TECHNICAL

OUTDOOR

DECORATIVE



WE WELCOME ALL CUSTOM ORDERS

CONTACT US:

sales@gordonbullard.com

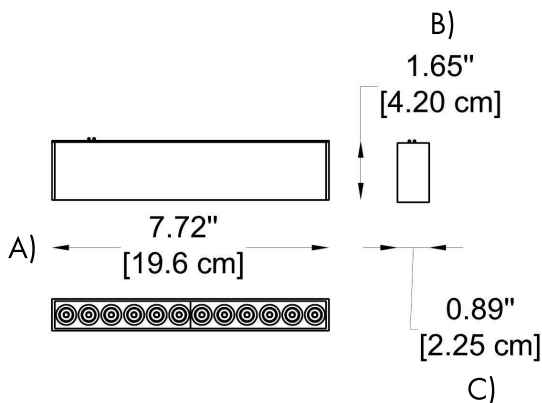
www.byiba.com

1 877-964-4646

PROJECT

SPEC TYPE

NOTES



LED



IP20



LUTRON

CASAMBI



### HOW TO ORDER:

Example:

CODE FOR TRACK: BY-BLMN-VND-S-L1-BL-BR

CODE FOR HEAD: F20S-K30-C80-WL-DIM

CODE FOR ACCESSORIES: 45D-CC-OCR-OCR-TC-IC-WH

CODE:

F20S-K30-  
C80-WL-  
DIM

6

### CHOOSE TRACK HEAD:

#### GENERAL INFORMATION

##### CODE -

-D12S

Dimensions:

A) Length - 7.72" (19.6 cm)

B) Height - 1.65" (4.2 cm)

C) Width - 0.89" (2.25 cm)

Material:

Aluminum

Light Source:

LED / 12W / 1000 lm / 24Vdc

Lighting type:

Direct

Lighting distribution:

Symmetric

Optical type:

Spot

Dimmable:

Yes

Driver:

Remote

Driver type:

Electronic

Emergency:

Without

Insulation class:

III

Beam Angle:

-B12 - 12°

-B34 - 34°

-B48 - 48°

CCT:

-K27 2700K

-K30 3000K

-K40 4000K

-K50 5000K

CRI:

-C80 - 80

-C90 - 90

Finish Options:

-WL - White (RAL9003)

-BL - Black (RAL9005)

-CUS Custom on request\*

Dimming Options:

-DIM - 0-10V

-DL - DALI

-TR TRIAC

-LT - Lutron

-CS - Casambi

Operating temperature range - -20 to +40°C

Maintenance of lumen - L80 - 50 000 hours at 25 °C

WWW.BULLARDCOLLECTION.COM

TECHNICAL

OUTDOOR

DECORATIVE



WE WELCOME ALL CUSTOM ORDERS

CONTACT US:

sales@gordonbullard.com

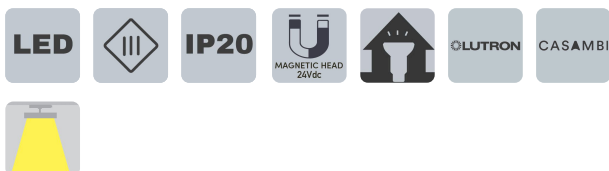
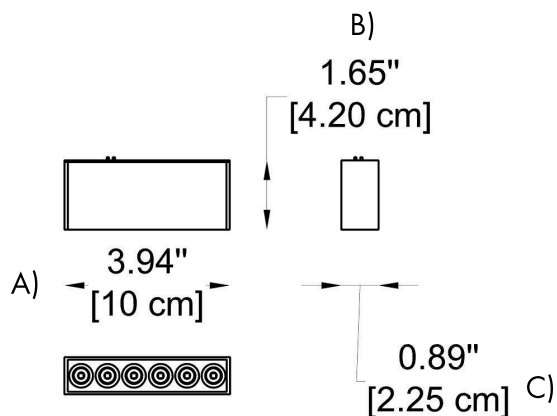
www.byiba.com

1 877-964-4646

PROJECT

SPEC TYPE

NOTES



### HOW TO ORDER:

Example:

CODE FOR TRACK: BY-BLMN-VND-S-L1-BL-BR

CODE FOR HEAD: F20S-K30-C80-WL-DIM

CODE FOR ACCESSORIES: 45D-CC-OCR-OCR-TC-IC-WH

CODE:

F20S-K30-  
C80-WL-  
DIM

6

### CHOOSE TRACK HEAD:

#### GENERAL INFORMATION

**CODE -** **-D06S**

Dimensions: A) Length - 3.94" (10 cm)  
B) Height - 1.65" (4.2 cm)  
C) Width - 0.89" (2.25 cm)

Material: Aliminum  
Light Source: LED / 6W / 380 lm / 24Vdc  
Lighting type: Direct  
Lighting distribution: Symmetric  
Optical type: Spot  
Dimmable: Yes  
Driver: Remote  
Driver type: Electronic  
Emergency: Without  
Insulation class: III

Beam Angle: **-B12** - 12°  
**-B34** - 34°  
**-B48** - 48°

CCT: **-K27** 2700K  
**-K30** - 3000K  
**-K40** - 4000K  
**-K50** - 5000K

CRI: **-C80** - 80  
**-C90** - 90

Finish Options: **-WL** - White (RAL9003)  
**-BL** - Black (RAL9005)  
**-CUS** Custom on request\*

Dimming Options: **-DIM** - 0-10V  
**-DL** - DALI  
**-TR** TRIAC  
**-LT** - Lutron  
**-CS** - Casambi

Operating temperature range - -20 to +40°C  
Maintenance of lumen - L80 - 50 000 hours at 25 °C

[WWW.BULLARDCOLLECTION.COM](http://WWW.BULLARDCOLLECTION.COM)

TECHNICAL

OUTDOOR

DECORATIVE



WE WELCOME ALL CUSTOM ORDERS

CONTACT US:

[sales@gordonbullard.com](mailto:sales@gordonbullard.com)

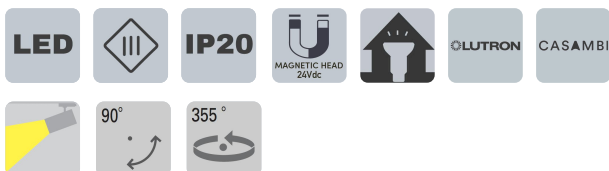
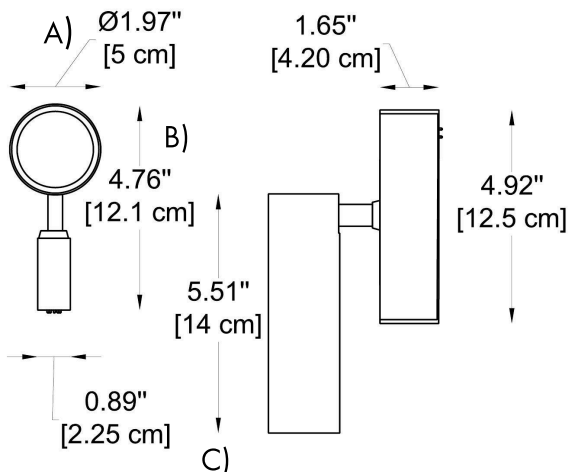
[www.byiba.com](http://www.byiba.com)

1 877-964-4646

PROJECT

SPEC TYPE

NOTES



### HOW TO ORDER:

Example:

CODE FOR TRACK: BY-BLMN-VND-S-L1-BL-BR

CODE FOR HEAD: F20S-K30-C80-WL-DIM

CODE FOR ACCESSORIES: 45D-CC-OCR-OCR-TC-IC-WH

CODE:

F20S-K30-  
C80-WL-  
DIM

6

### CHOOSE TRACK HEAD:

#### GENERAL INFORMATION

CODE - **-S50S**

Dimensions: A) Diameter - 1.97" (5 cm)  
B) Max. Height - 4.76" (12.1 cm)  
C) Head Length - 5.51" (14 cm)

Material: Aliminum  
Light Source: LED / 10W / 700 lm / 24Vdc  
Lighting type: Direct  
Lighting distribution: Symmetric  
Optical type: Spot  
Dimmable: Yes  
Driver: Remote  
Driver type: Electronic  
Emergency: Without  
Insulation class: III

Beam Angle: **-B18** - 18°  
**-B24** - 24°  
**-B36** - 36°

CCT: **-K27** 2700K  
**-K30** - 3000K  
**-K40** - 4000K  
**-K50** - 5000K

CRI: **-C80** - 80  
**-C90** - 90

Finish Options: **-WL** - White (RAL9003)  
**-BL** - Black (RAL9005)  
**-CUS** Custom on request\*

Dimming Options: **-DIM** - 0-10V  
**-DL** - DALI  
**-TR** TRIAC  
**-LT** - Lutron  
**-CS** - Casambi

Operating temperature range - -20 to +40°C  
Maintenance of lumen - L80 - 50 000 hours at 25 °C

[WWW.BULLARDCOLLECTION.COM](http://WWW.BULLARDCOLLECTION.COM)

TECHNICAL

OUTDOOR

DECORATIVE



WE WELCOME ALL CUSTOM ORDERS

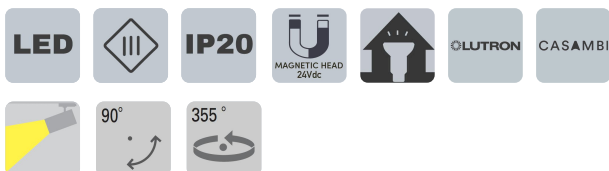
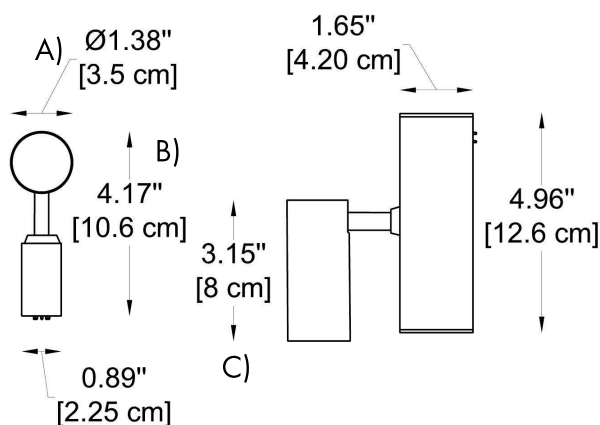
CONTACT US:

[sales@gordonbullard.com](mailto:sales@gordonbullard.com)  
[www.byiba.com](http://www.byiba.com)  
1 877-964-4646

PROJECT

SPEC TYPE

NOTES



### HOW TO ORDER:

Example:

CODE FOR TRACK: BY-BLMN-VND-S-L1-BL-BR

CODE FOR HEAD: F20S-K30-C80-WL-DIM

CODE FOR ACCESSORIES: 45D-CC-OCR-OCR-TC-IC-WH

CODE:

F20S-K30-  
C80-WL-  
DIM

6

### CHOOSE TRACK HEAD:

#### GENERAL INFORMATION

CODE -

-S35S

Dimensions:

A) Diameter - 1.38" (3.5 cm)

B) Max. Height - 4.17" (10.6 cm)

C) Head Length - 3.15" (8 cm)

Material:

Aluminum

Light Source:

LED / 5W / 378 lm / 24Vdc

Lighting type:

Direct

Lighting distribution:

Symmetric

Optical type:

Spot

Dimmable:

Yes

Driver:

Remote

Driver type:

Electronic

Emergency:

Without

Insulation class:

III

Beam Angle:

-B20 - 20°

-B30 - 30°

-B40 - 40°

-B60 - 60°

CCT:

-K27 2700K

-K30 3000K

-K40 4000K

-K50 5000K

CRI:

-C80 80

-C90 90

Finish Options:

-WL - White (RAL9003)

-BL - Black (RAL9005)

-CUS Custom on request\*

Dimming Options:

-DIM - 0-10V

-DL - DALI

-TR TRIAC

-LT - Lutron

-CS - Casambi

Operating temperature range - -20 to +40°C

Maintenance of lumen - L80 - 50 000 hours at 25 °C

[WWW.BULLARDCOLLECTION.COM](http://WWW.BULLARDCOLLECTION.COM)

TECHNICAL

OUTDOOR

DECORATIVE



WE WELCOME ALL CUSTOM ORDERS

CONTACT US:

[sales@gordonbullard.com](mailto:sales@gordonbullard.com)

[www.byiba.com](http://www.byiba.com)

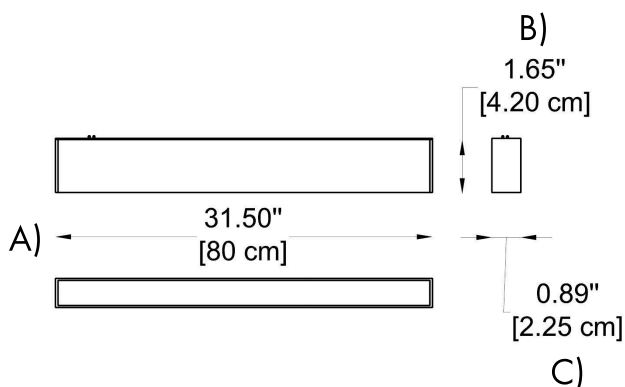
1 877-964-4646



PROJECT

SPEC TYPE

NOTES



### HOW TO ORDER:

Example:

CODE FOR TRACK: BY-BLMN-VND-S-L1-BL-BR

CODE FOR HEAD: F20S-K30-C80-WL-DIM

CODE FOR ACCESSORIES: 45D-CC-OCR-OCR-TC-IC-WH

CODE:

F20S-K30-  
C80-WL-  
DIM

6

### CHOOSE TRACK HEAD:

#### GENERAL INFORMATION

CODE -

-L80S

Dimensions:

A) Length - 31.5" (80 cm)  
B) Height - 1.65" (4.2 cm)  
C) Width - 0.89" (2.25 cm)

Material:

Aluminum

Light Source:

LED / 30W / 1500 lm / 24Vdc

Lighting type:

Direct

Lighting distribution:

Symmetric

Optical type:

Diffuse

Dimmable:

Yes

Driver:

Remote

Driver type:

Electronic

Emergency:

Without

Insulation class:

III

CCT:

-K27 2700K  
-K30 3000K  
-K40 4000K  
-K50 5000K

CRI:

-C80 80  
-C90 90

Finish Options:

-WL - White (RAL9003)  
-BL - Black (RAL9005)  
-CUS Custom on request\*

Dimming Options:

-DIM 0-10V  
-DL DALI  
-TR TRIAC  
-LT Lutron  
-CS Casambi

Operating temperature range - -4°F to +104°F

Maintenance of lumen - L80 - 50,000 hours at 77°F

[WWW.BULLARDCOLLECTION.COM](http://WWW.BULLARDCOLLECTION.COM)

TECHNICAL

OUTDOOR

DECORATIVE



WE WELCOME ALL CUSTOM ORDERS

CONTACT US:

[sales@gordonbullard.com](mailto:sales@gordonbullard.com)

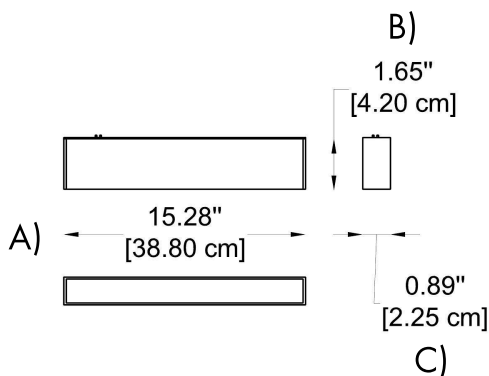
[www.byiba.com](http://www.byiba.com)

1 877-964-4646

PROJECT

SPEC TYPE

NOTES



LED



IP20



CLUTRON

CASAMBI



### HOW TO ORDER:

Example:

CODE FOR TRACK: BY-BLMN-VND-S-L1-BL-BR

CODE FOR HEAD: F20S-K30-C80-WL-DIM

CODE FOR ACCESSORIES: 45D-CC-OCR-OCR-TC-IC-WH

CODE:

F20S-K30-  
C80-WL-  
DIM

6

### CHOOSE TRACK HEAD:

#### GENERAL INFORMATION

CODE -

-L40S

Dimensions:

A) Length - 14.28" (40 cm)

B) Height - 1.65" (4.2 cm)

C) Width - 0.89" (2.25 cm)

Material:

Aluminum

Light Source:

LED / 15W / 600 lm / 24Vdc

Lighting type:

Direct

Lighting distribution:

Symmetric

Optical type:

Diffuse

Dimmable:

Yes

Driver:

Remote

Driver type:

Electronic

Emergency:

Without

Insulation class:

III

CCT:

-K27 2700K

-K30 3000K

-K40 4000K

-K50 5000K

CRI:

-C80 80

-C90 90

Finish Options:

-WL - White (RAL9003)

-BL - Black (RAL9005)

-CUS Custom on request\*

Dimming Options:

-DIM - 0-10V

-DL - DALI

-TR TRIAC

-LT - Lutron

-CS - Casambi

Operating temperature range - -4°F to +104°F

Maintenance of lumen - L80 - 50,000 hours at 77°F

[WWW.BULLARDCOLLECTION.COM](http://WWW.BULLARDCOLLECTION.COM)

TECHNICAL

OUTDOOR

DECORATIVE



WE WELCOME ALL CUSTOM ORDERS

CONTACT US:

[sales@gordonbullard.com](mailto:sales@gordonbullard.com)

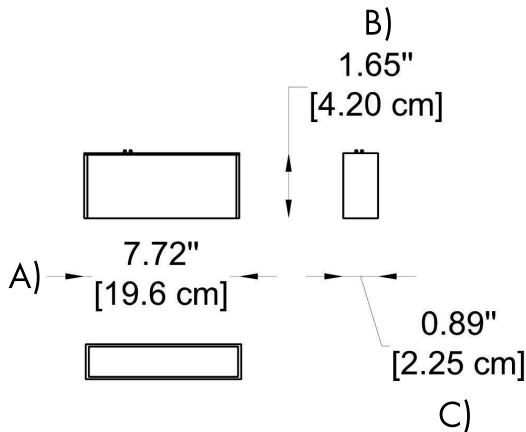
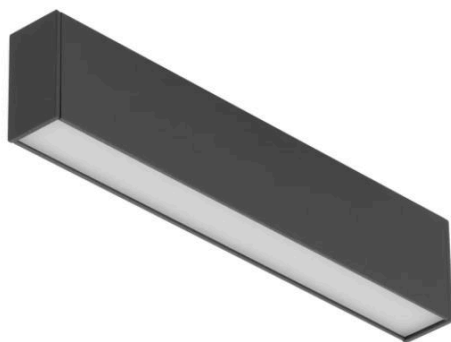
[www.byiba.com](http://www.byiba.com)

1 877-964-4646

PROJECT

SPEC TYPE

NOTES



### HOW TO ORDER:

Example:

CODE FOR TRACK: BY-BLMN-VND-S-L1-BL-BR

CODE FOR HEAD: F20S-K30-C80-WL-DIM

CODE FOR ACCESSORIES: 45D-CC-OCR-OCR-TC-IC-WH

CODE:

F20S-K30-  
C80-WL-  
DIM

6

### CHOOSE TRACK HEAD:

#### GENERAL INFORMATION

CODE -

-L20S

Dimensions:

A) Length - 7.72" (19.6 cm)

B) Height - 1.65" (4.2 cm)

C) Width - 0.89" (2.25 cm)

Material:

Aluminum

Light Source:

LED / 8W / 262 lm / 24Vdc

Lighting type:

Direct

Lighting distribution:

Symmetric

Optical type:

Diffuse

Dimmable:

Yes

Driver:

Remote

Driver type:

Electronic

Emergency:

Without

Insulation class:

III

CCT:

-K27 2700K

-K30 3000K

-K40 4000K

-K50 5000K

CRI:

-C80 80

-C90 90

Finish Options:

-WL - White (RAL9003)

-BL - Black (RAL9005)

-CUS Custom on request\*

Dimming Options:

-DIM - 0-10V

-DL - DALI

-TR TRIAC

-LT - Lutron

-CS - Casambi

Operating temperature range - -4°F to +104°F

Maintenance of lumen - L80 - 50,000 hours at 77°F

[WWW.BULLARDCOLLECTION.COM](http://WWW.BULLARDCOLLECTION.COM)

TECHNICAL

OUTDOOR

DECORATIVE



WE WELCOME ALL CUSTOM ORDERS

CONTACT US:

[sales@gordonbullard.com](mailto:sales@gordonbullard.com)

[www.byiba.com](http://www.byiba.com)

1 877-964-4646

PROJECT

SPEC TYPE

HOW TO ORDER (accessories):

Example:  
CODE: 45D-CC-OCR-OCR-TC-IC-WH

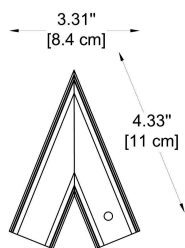
CODE:

45D-CC-  
OCR-OCR-  
TC-IC-WH

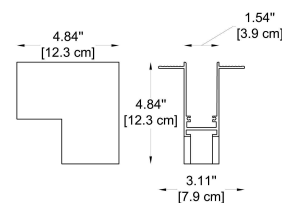
6

ACCESSORIES:

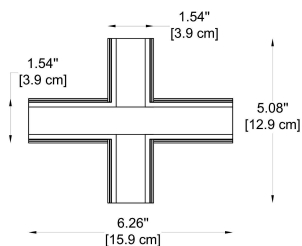
CODE - -45D  
45D Corner



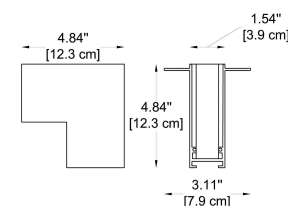
CODE - -OCR  
Outer Corner-R



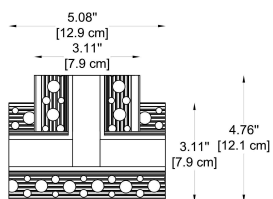
CODE - -CC  
Cross Corner



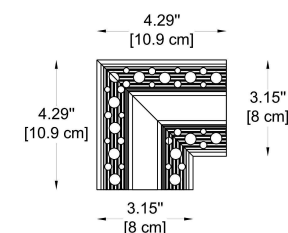
CODE - -ICR  
Inner Corner-R



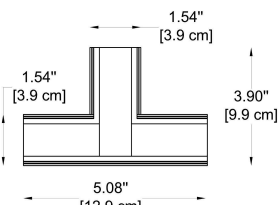
CODE - -TCR  
T Corner-R



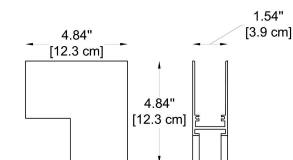
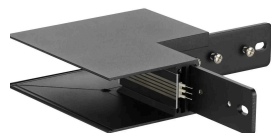
CODE - -OCR  
L Corner-R



CODE - -TC  
T Corner



CODE - -OC  
Outer Corner



[WWW.BULLARDCOLLECTION.COM](http://WWW.BULLARDCOLLECTION.COM)

TECHNICAL

OUTDOOR

DECORATIVE



WE WELCOME ALL CUSTOM ORDERS

CONTACT US:

[sales@gordonbullard.com](mailto:sales@gordonbullard.com)

[www.byiba.com](http://www.byiba.com)

1 877-964-4646

PROJECT

SPEC TYPE

HOW TO ORDER:

Example:  
CODE: 45D-CC-OCR-OCR-TC-IC-WH

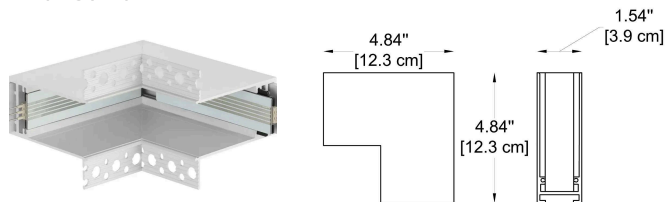
CODE:

45D-CC-  
OCR-OCR-  
TC-IC-WH

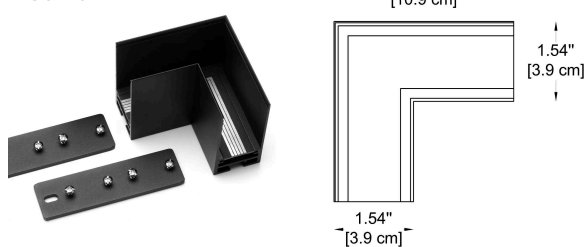
6

## ACCESSORIES:

CODE - -IC  
Inner Corner



CODE - -LC  
L Corner



7

## ACCESSORIES FINISH OPTIONS:

- WL - White (RAL9003)
- BL - Black (RAL9005)
- CUS Custom on request\*

[WWW.BULLARDCOLLECTION.COM](http://WWW.BULLARDCOLLECTION.COM)

TECHNICAL

OUTDOOR

DECORATIVE



WE WELCOME ALL CUSTOM ORDERS

CONTACT US:

sales@gordonbullard.com  
[www.byiba.com](http://www.byiba.com)  
1 877-964-4646