



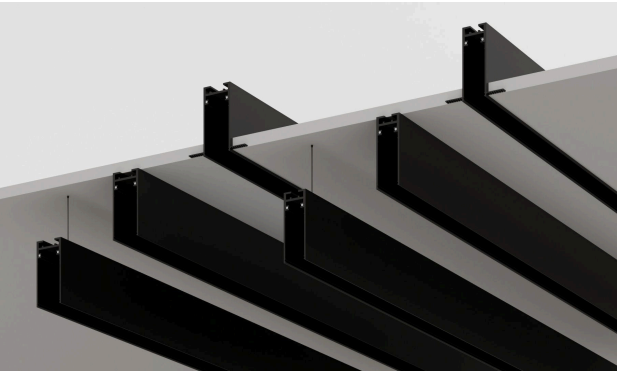
BYIBA LINEAR MINI (magnetic track system)

BY-BLMN-VND

PROJECT

SPEC TYPE

NOTES



Surface- Mounted / Recessed / Suspension



GENERAL INFORMATION:

The BYIBA LINEAR MINI (Mini Version) is a versatile magnetic track lighting system designed to bring flexibility and elegance to modern interiors. Built from high-quality aluminum with refined finishing options —Black, White, Bronze, or Gold—it adapts seamlessly to diverse architectural styles. This system offers multiple installation types, including surface-mounted, recessed, and suspension setups, making it suitable for residential, commercial, and hospitality applications. The LED-powered track ensures efficient, long-lasting illumination, while the magnetic connection provides effortless repositioning and customization of fixtures.

MATERIAL:

Aluminum

FINISHING:

Black / White / Bronze / Gold

LIGHTING:

LED

INPUT VOLTAGE:

24VDC

IP RATING:

20

MAXIMUM POWER:

200W

CONNECTION:

Terminal

INSTALLATION TYPE:

Surface / Suspended / Recessed

APPLIANCE CLASS:

I

WWW.BYIBA.COM

- TECHNICAL
- OUTDOOR
- DECORATIVE



WE WELCOME ALL CUSTOM ORDERS

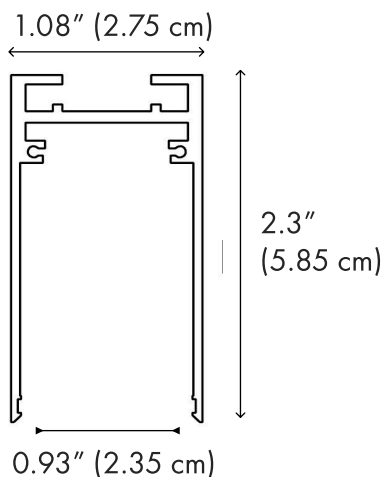
CONTACT US:

sales@gordonbullard.com
www.byiba.com
 1 877-964-4646

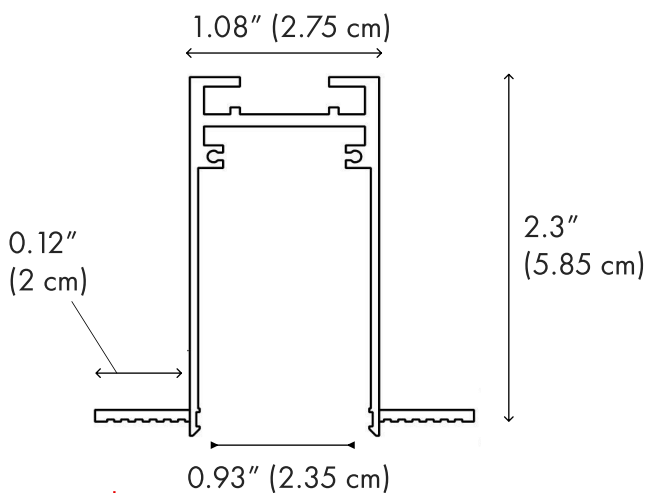
PROJECT

SPEC TYPE

NOTES



Surface-Mounted / Suspended



Recessed



HOW TO ORDER:

Example:

CODE FOR TRACK: BY-BLMN-VND-S-CUS-BL-BR

CODE FOR TRACK HEAD: F20S-K30-C80-WL-DIM

CODE FOR ACCESSORIES: 45D-CC-OCR-OCR-TC-IC-WH

CODE:

BY-BLMN-VND-S-CUS-BL-BR

1 INSTALLATION TYPE:

- S Suspension
- R Recessed
- SM Surface-Mounted

2 PROFILE DIMENSIONS:

Width - W: 1.08" (2.75 cm)

Height - H: 2.3" (5.85 cm)

3 LENGHT:

- L1 Lenght - L: 39,37" (100 cm)
- L2 Lenght - L: 78,74" (200 cm)
- L3 Lenght - L: 118,11" (300 cm)
- CUS Custom on request

4 TRACK FINISH OPTIONS:

- BL Black
- BR Bronze
- WH White
- GL Gold

5 CANOPY FINISH OPTIONS: (for suspension version)

- BL Black
- BR Bronze
- WH White
- GL Gold

WWW.BYIBA.COM

TECHNICAL

OUTDOOR

DECORATIVE



WE WELCOME ALL CUSTOM ORDERS

CONTACT US:

sales@gordonbullard.com

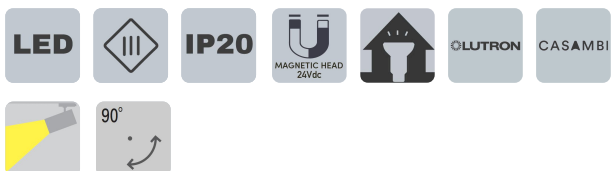
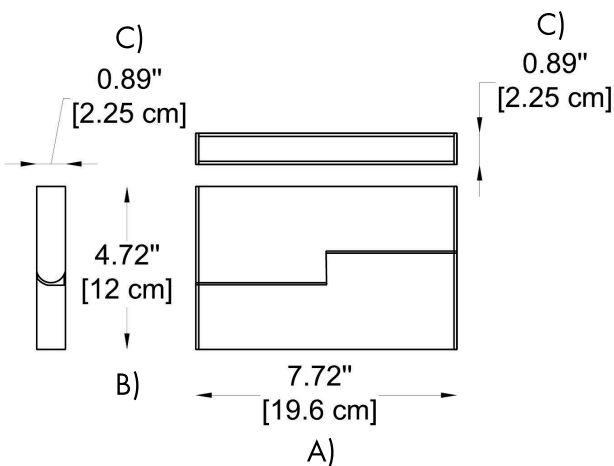
www.byiba.com

1 877-964-4646

PROJECT

SPEC TYPE

NOTES



HOW TO ORDER:

Example:

CODE FOR TRACK: BY-BLMN-VND-S-CUS-BL-BR

CODE FOR TRACK HEAD: F20S-K30-C80-WL-DIM

CODE FOR ACCESSORIES: 45D-CC-OCR-OCR-TC-IC-WH

CODE:

F20S-K30-
C80-WL-
DIM

6

CHOOSE TRACK HEAD:

GENERAL INFORMATION

CODE -

-F20S

Dimensions:

A) Length - 7.72" (19.6 cm)

B) Height - 4.72" (12 cm)

C) Width - 0.89" (2.25 cm)

Material:

Aluminum

Light Source:

LED / 15W / 808 lm / 24Vdc

Lighting type:

Direct

Lighting distribution:

Symmetric

Optical type:

Diffuse

Dimmable:

Yes

Driver:

Remote

Driver type:

Electronic

Emergency:

Without

Insulation class:

III

CCT:

-K27 2700K

-K30 - 3000K

-K40 - 4000K

-K50 - 5000K

CRI:

-C80 - 80

-C90 - 90

Finish Options:

-WL - White (RAL9003)

-BL - Black (RAL9005)

-CUS Custom on request*

Dimming Options:

-DIM - 0-10V

-DL - DALI

-TR TRIAC

-LT - Lutron

-CS - Casambi

Operating temperature range - -4°F to +104°F

Maintenance of lumen - L80 - 50,000 hours at 77°F

WWW.BULLARDCOLLECTION.COM

TECHNICAL

OUTDOOR

DECORATIVE



WE WELCOME ALL CUSTOM ORDERS

CONTACT US:

sales@gordonbullard.com

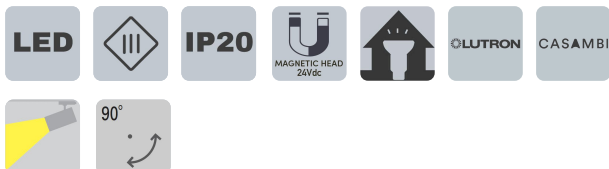
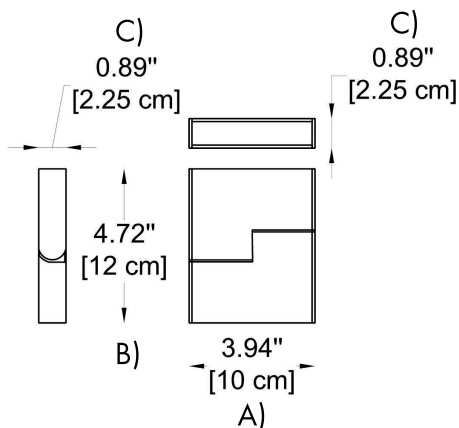
www.byiba.com

1 877-964-4646

PROJECT

SPEC TYPE

NOTES



HOW TO ORDER:

Example:

CODE FOR TRACK: BY-BLMN-VND-S-CUS-BL-BR

CODE FOR TRACK HEAD: F20S-K30-C80-WL-DIM

CODE FOR ACCESSORIES: 45D-CC-OCR-OCR-TC-IC-WH

CODE:

F20S-K30-
C80-WL-
DIM

6

CHOOSE TRACK HEAD:

GENERAL INFORMATION

CODE - **-F10S**

Dimensions: A) Length - 3.94" (10 cm)
B) Height - 4.72" (12 cm)
C) Width - 0.89" (2.25 cm)

Material: Aliminum
Light Source: LED / 8W / 481 lm / 24Vdc
Lighting type: Direct
Lighting distribution: Symmetric
Optical type: Diffuse
Dimmable: Yes
Driver: Remote
Driver type: Electronic
Emergency: Without
Insulation class: III

CCT: **-K27** 2700K
-K30 - 3000K
-K40 - 4000K
-K50 - 5000K

CRI: **-C80** - 80
-C90 - 90

Finish Options: **-WL** - White (RAL9003)
-BL - Black (RAL9005)
-CUS Custom on request*

Dimming Options: **-DIM** - 0-10V
-DL - DALI
-TR TRIAC
-LT - Lutron
-CS - Casambi

Operating temperature range - -4°F to +104°F
Maintenance of lumen - L80 - 50,000 hours at 77°F

WWW.BULLARDCOLLECTION.COM

TECHNICAL

OUTDOOR

DECORATIVE



WE WELCOME ALL CUSTOM ORDERS

CONTACT US:

sales@gordonbullard.com

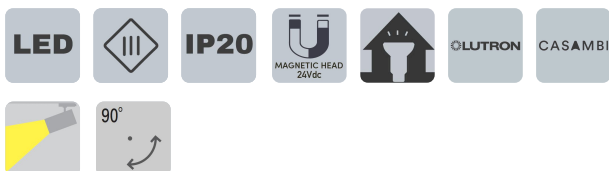
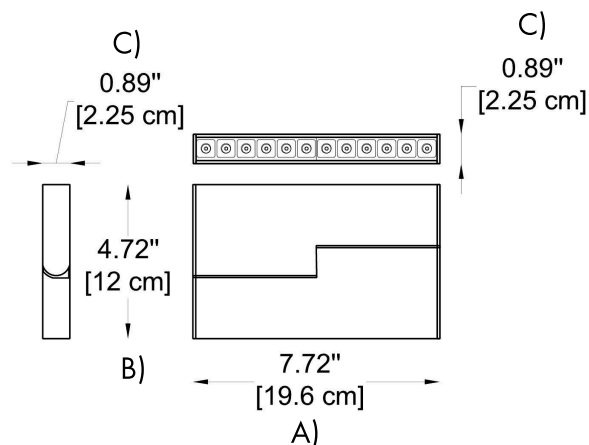
www.byiba.com

1 877-964-4646

PROJECT

SPEC TYPE

NOTES



HOW TO ORDER:

Example:

CODE FOR TRACK: BY-BLMN-VND-S-CUS-BL-BR

CODE FOR TRACK HEAD: F20S-K30-C80-WL-DIM

CODE FOR ACCESSORIES: 45D-CC-OCR-OCR-TC-IC-WH

CODE:

F20S-K30-
C80-WL-
DIM

6

CHOOSE TRACK HEAD:

GENERAL INFORMATION

CODE -

-F12S

Dimensions:

A) Length - 7.72" (19.6 cm)

B) Height - 4.72" (12 cm)

C) Width - 0.89" (2.25 cm)

Material:

Aluminum

Light Source:

LED / 16W / 1000 lm / 24Vdc

Lighting type:

Direct

Lighting distribution:

Symmetric

Optical type:

Spot

Dimmable:

Yes

Driver:

Remote

Driver type:

Electronic

Emergency:

Without

Insulation class:

III

Beam Angle:

-B12 - 12°

-B34 - 34°

-B48 - 48°

CCT:

-K27 2700K

-K30 3000K

-K40 4000K

-K50 5000K

CRI:

-C80 - 80

-C90 - 90

Finish Options:

-WL - White (RAL9003)

-BL - Black (RAL9005)

-CUS Custom on request*

Dimming Options:

-DIM - 0-10V

-DL - DALI

-TR TRIAC

-LT - Lutron

-CS - Casambi

Operating temperature range - -20 to +40°C

Maintenance of lumen - L80 - 50 000 hours at 25 °C

WWW.BULLARDCOLLECTION.COM

TECHNICAL

OUTDOOR

DECORATIVE



WE WELCOME ALL CUSTOM ORDERS

CONTACT US:

sales@gordonbullard.com

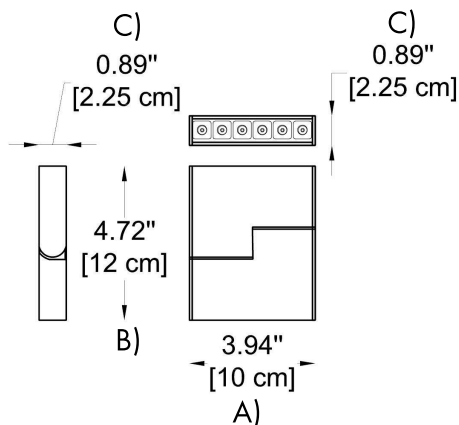
www.byiba.com

1 877-964-4646

PROJECT

SPEC TYPE

NOTES



LED



IP20



LUTRON

CASAMBI



HOW TO ORDER:

Example:

CODE FOR TRACK: BY-BLMN-VND-S-CUS-BL-BR

CODE FOR TRACK HEAD: F20S-K30-C80-WL-DIM

CODE FOR ACCESSORIES: 45D-CC-OCR-OCR-TC-IC-WH

CODE:

F20S-K30-
C80-WL-
DIM

6

CHOOSE TRACK HEAD:

GENERAL INFORMATION

CODE -

-F06S

Dimensions:

A) Length - 3.94" (10 cm)

B) Height - 4.72" (12 cm)

C) Width - 0.89" (2.25 cm)

Material:

Aluminum

Light Source:

LED / 8W / 511 lm / 24Vdc

Lighting type:

Direct

Lighting distribution:

Symmetric

Optical type:

Spot

Dimmable:

Yes

Driver:

Remote

Driver type:

Electronic

Emergency:

Without

Insulation class:

III

Beam Angle:

-B18 - 18°

-B34 - 34°

-B48 - 48°

CCT:

-K27 2700K

-K30 3000K

-K40 4000K

-K50 5000K

CRI:

-C80 - 80

-C90 - 90

Finish Options:

-WL - White (RAL9003)

-BL - Black (RAL9005)

-CUS Custom on request*

Dimming Options:

-DIM - 0-10V

-DL - DALI

-TR TRIAC

-LT - Lutron

-CS - Casambi

Operating temperature range - -20 to +40°C

Maintenance of lumen - L80 - 50 000 hours at 25 °C

WWW.BULLARDCOLLECTION.COM

TECHNICAL

OUTDOOR

DECORATIVE



WE WELCOME ALL CUSTOM ORDERS

CONTACT US:

sales@gordonbullard.com

www.byiba.com

1 877-964-4646

PROJECT

SPEC TYPE

NOTES

HOW TO ORDER:

CODE:

Example:

CODE FOR TRACK: BY-BLMN-VND-S-CUS-BL-BR

CODE FOR TRACK HEAD: F20S-K30-C80-WL-DIM

CODE FOR ACCESSORIES: 45D-CC-OCR-OCR-TC-IC-WH

F20S-K30-
C80-WL-
DIM

6

CHOOSE TRACK HEAD:

GENERAL INFORMATION

CODE -

-D24S

Dimensions:

A) Length - 15.28" (38.8 cm)

B) Height - 1.65" (4.2 cm)

C) Width - 0.89" (2.25 cm)

Material:

Aluminum

Light Source:

LED / 24W / 1920 lm / 24Vdc

Lighting type:

Direct

Lighting distribution:

Symmetric

Optical type:

Spot

Dimmable:

Yes

Driver:

Remote

Driver type:

Electronic

Emergency:

Without

Insulation class:

III

Beam Angle:

-B12 - 12°

-B34 - 34°

-B48 - 48°

CCT:

-K27 2700K

-K30 3000K

-K40 4000K

-K50 5000K

CRI:

-C80 - 80

-C90 - 90

Finish Options:

-WL - White (RAL9003)

-BL - Black (RAL9005)

-CUS Custom on request*

Dimming Options:

-DIM - 0-10V

-DL - DALI

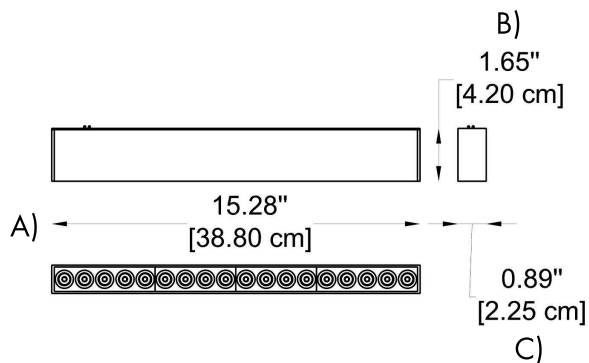
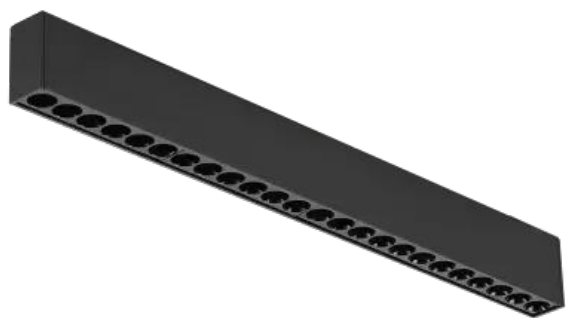
-TR TRIAC

-LT - Lutron

-CS - Casambi

Operating temperature range - -20 to +40°C

Maintenance of lumen - L80 - 50 000 hours at 25 °C



WWW.BULLARDCOLLECTION.COM

TECHNICAL

OUTDOOR

DECORATIVE



WE WELCOME ALL CUSTOM ORDERS

CONTACT US:

sales@gordonbullard.com

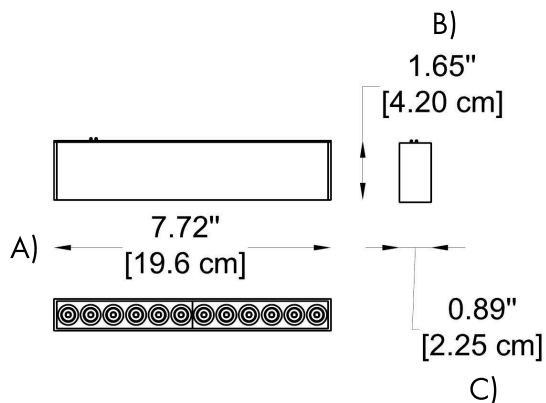
www.byiba.com

1 877-964-4646

PROJECT

SPEC TYPE

NOTES



HOW TO ORDER:

Example:

CODE FOR TRACK: BY-BLMN-VND-S-CUS-BL-BR

CODE FOR TRACK HEAD: F20S-K30-C80-WL-DIM

CODE FOR ACCESSORIES: 45D-CC-OCR-OCR-TC-IC-WH

CODE:

F20S-K30-
C80-WL-
DIM

6

CHOOSE TRACK HEAD:

GENERAL INFORMATION

CODE - **-D12S**

Dimensions: A) Length - 7.72" (19.6 cm)
B) Height - 1.65" (4.2 cm)
C) Width - 0.89" (2.25 cm)

Material: Aliminum
Light Source: LED / 12W / 1000 lm / 24Vdc
Lighting type: Direct
Lighting distribution: Symmetric
Optical type: Spot
Dimmable: Yes
Driver: Remote
Driver type: Electronic
Emergency: Without
Insulation class: III

Beam Angle: **-B12** - 12°
-B34 - 34°
-B48 - 48°

CCT: **-K27** 2700K
-K30 - 3000K
-K40 - 4000K
-K50 - 5000K

CRI: **-C80** - 80
-C90 - 90

Finish Options: **-WL** - White (RAL9003)
-BL - Black (RAL9005)
-CUS Custom on request*

Dimming Options: **-DIM** - 0-10V
-DL - DALI
-TR TRIAC
-LT - Lutron
-CS - Casambi

Operating temperature range - -20 to +40°C
Maintenance of lumen - L80 - 50 000 hours at 25 °C

WWW.BULLARDCOLLECTION.COM

TECHNICAL

OUTDOOR

DECORATIVE



WE WELCOME ALL CUSTOM ORDERS

CONTACT US:

sales@gordonbullard.com

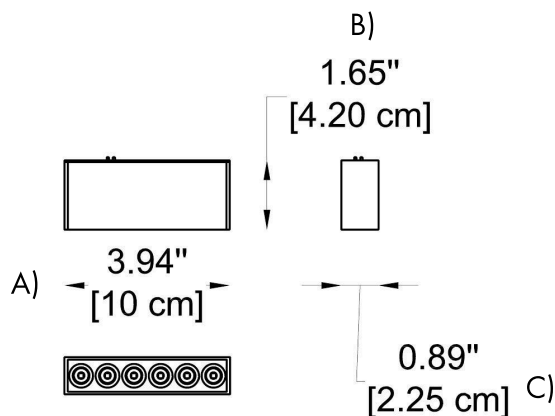
www.byiba.com

1 877-964-4646

PROJECT

SPEC TYPE

NOTES



HOW TO ORDER:

Example:

CODE FOR TRACK: BY-BLMN-VND-S-CUS-BL-BR

CODE FOR TRACK HEAD: F20S-K30-C80-WL-DIM

CODE FOR ACCESSORIES: 45D-CC-OCR-OCR-TC-IC-WH

CODE:

F20S-K30-
C80-WL-
DIM

6

CHOOSE TRACK HEAD:

GENERAL INFORMATION

CODE - **-D06S**

Dimensions: A) Length - 3.94" (10 cm)
B) Height - 1.65" (4.2 cm)
C) Width - 0.89" (2.25 cm)

Material: Aliminum
Light Source: LED / 6W / 380 lm / 24Vdc
Lighting type: Direct
Lighting distribution: Symmetric
Optical type: Spot
Dimmable: Yes
Driver: Remote
Driver type: Electronic
Emergency: Without
Insulation class: III

Beam Angle: **-B12** - 12°
-B34 - 34°
-B48 - 48°

CCT: **-K27** 2700K
-K30 - 3000K
-K40 - 4000K
-K50 - 5000K

CRI: **-C80** - 80
-C90 - 90

Finish Options: **-WL** - White (RAL9003)
-BL - Black (RAL9005)
-CUS Custom on request*

Dimming Options: **-DIM** - 0-10V
-DL - DALI
-TR TRIAC
-LT - Lutron
-CS - Casambi

Operating temperature range - -20 to +40°C
Maintenance of lumen - L80 - 50 000 hours at 25 °C

WWW.BULLARDCOLLECTION.COM

TECHNICAL

OUTDOOR

DECORATIVE



WE WELCOME ALL CUSTOM ORDERS

CONTACT US:

sales@gordonbullard.com

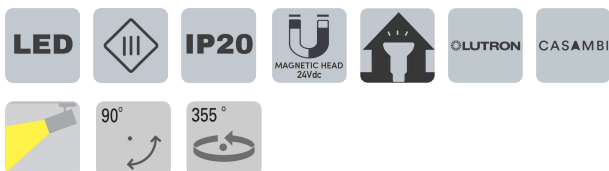
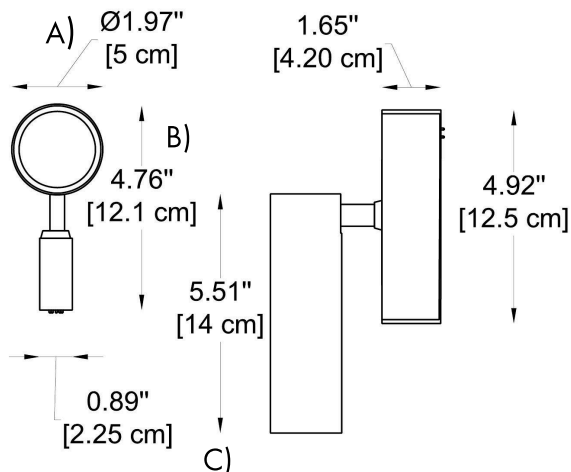
www.byiba.com

1 877-964-4646

PROJECT

SPEC TYPE

NOTES



HOW TO ORDER:

Example:

CODE FOR TRACK: BY-BLMN-VND-S-CUS-BL-BR

CODE FOR TRACK HEAD: F20S-K30-C80-WL-DIM

CODE FOR ACCESSORIES: 45D-CC-OCR-OCR-TC-IC-WH

CODE:

F20S-K30-
C80-WL-
DIM

6

CHOOSE TRACK HEAD:

GENERAL INFORMATION

CODE - **-S50S**

Dimensions: A) Diameter - 1.97" (5 cm)
B) Max. Height - 4.76" (12.1 cm)
C) Head Length - 5.51" (14 cm)

Material: Aliminum
Light Source: LED / 10W / 700 lm / 24Vdc
Lighting type: Direct
Lighting distribution: Symmetric
Optical type: Spot
Dimmable: Yes
Driver: Remote
Driver type: Electronic
Emergency: Without
Insulation class: III

Beam Angle: **-B18** - 18°
-B24 - 24°
-B36 - 36°

CCT: **-K27** 2700K
-K30 - 3000K
-K40 - 4000K
-K50 - 5000K

CRI: **-C80** - 80
-C90 - 90

Finish Options: **-WL** - White (RAL9003)
-BL - Black (RAL9005)
-CUS Custom on request*

Dimming Options: **-DIM** - 0-10V
-DL - DALI
-TR TRIAC
-LT - Lutron
-CS - Casambi

Operating temperature range - -20 to +40°C
Maintenance of lumen - L80 - 50 000 hours at 25 °C

WWW.BULLARDCOLLECTION.COM

TECHNICAL

OUTDOOR

DECORATIVE



WE WELCOME ALL CUSTOM ORDERS

CONTACT US:

sales@gordonbullard.com

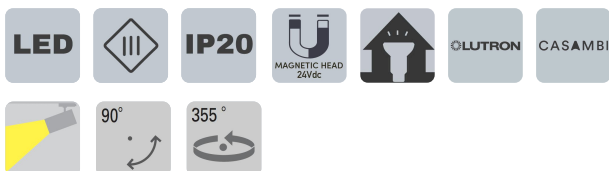
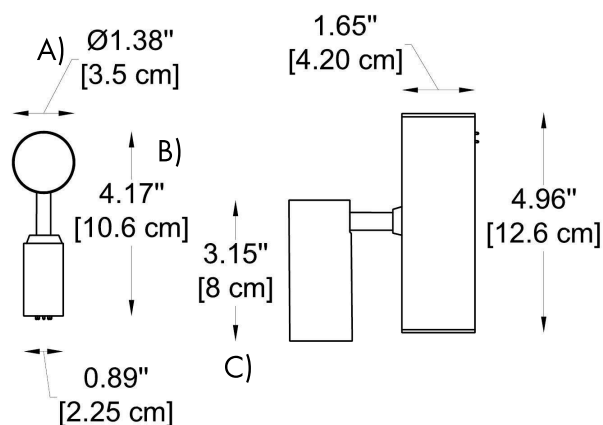
www.byiba.com

1 877-964-4646

PROJECT

SPEC TYPE

NOTES



HOW TO ORDER:

Example:

CODE FOR TRACK: BY-BLMN-VND-S-CUS-BL-BR

CODE FOR TRACK HEAD: F20S-K30-C80-WL-DIM

CODE FOR ACCESSORIES: 45D-CC-OCR-OCR-TC-IC-WH

CODE:

F20S-K30-
C80-WL-
DIM

6

CHOOSE TRACK HEAD:

GENERAL INFORMATION

CODE -

-S35S

Dimensions:

A) Diameter - 1.38" (3.5 cm)

B) Max. Height - 4.17" (10.6 cm)

C) Head Length - 3.15" (8 cm)

Material:

Aluminum

Light Source:

LED / 5W / 378 lm / 24Vdc

Lighting type:

Direct

Lighting distribution:

Symmetric

Optical type:

Spot

Dimmable:

Yes

Driver:

Remote

Driver type:

Electronic

Emergency:

Without

Insulation class:

III

Beam Angle:

-B20 - 20°

-B30 - 30°

-B40 - 40°

-B60 - 60°

CCT:

-K27 2700K

-K30 3000K

-K40 4000K

-K50 5000K

CRI:

-C80 80

-C90 90

Finish Options:

-WL - White (RAL9003)

-BL - Black (RAL9005)

-CUS Custom on request*

Dimming Options:

-DIM - 0-10V

-DL - DALI

-TR TRIAC

-LT - Lutron

-CS - Casambi

Operating temperature range - -20 to +40°C

Maintenance of lumen - L80 - 50 000 hours at 25 °C

WWW.BULLARDCOLLECTION.COM

TECHNICAL

OUTDOOR

DECORATIVE



WE WELCOME ALL CUSTOM ORDERS

CONTACT US:

sales@gordonbullard.com

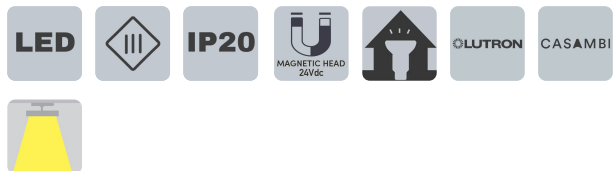
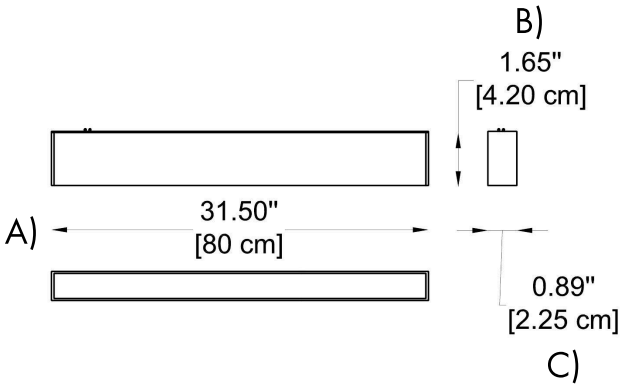
www.byiba.com

1 877-964-4646

PROJECT

SPEC TYPE

NOTES



HOW TO ORDER:

Example:

CODE FOR TRACK: BY-BLMN-VND-S-CUS-BL-BR

CODE FOR TRACK HEAD: F20S-K30-C80-WL-DIM

CODE FOR ACCESSORIES: 45D-CC-OCR-OCR-TC-IC-WH

CODE:

F20S-K30-
C80-WL-
DIM

6

CHOOSE TRACK HEAD:

GENERAL INFORMATION

CODE -

-L80S

Dimensions:

A) Length - 31.5" (80 cm)
B) Height - 1.65" (4.2 cm)
C) Width - 0.89" (2.25 cm)

Material:

Aluminum

Light Source:

LED / 30W / 1500 lm / 24Vdc

Lighting type:

Direct

Lighting distribution:

Symmetric

Optical type:

Diffuse

Dimmable:

Yes

Driver:

Remote

Driver type:

Electronic

Emergency:

Without

Insulation class:

III

CCT:

-K27 2700K
-K30 3000K
-K40 4000K
-K50 5000K

CRI:

-C80 80
-C90 90

Finish Options:

-WL - White (RAL9003)
-BL - Black (RAL9005)
-CUS Custom on request*

Dimming Options:

-DIM 0-10V
-DL DALI
-TR TRIAC
-LT Lutron
-CS Casambi

Operating temperature range - -4°F to +104°F

Maintenance of lumen - L80 - 50,000 hours at 77°F

WWW.BULLARDCOLLECTION.COM

TECHNICAL

OUTDOOR

DECORATIVE



WE WELCOME ALL CUSTOM ORDERS

CONTACT US:

sales@gordonbullard.com

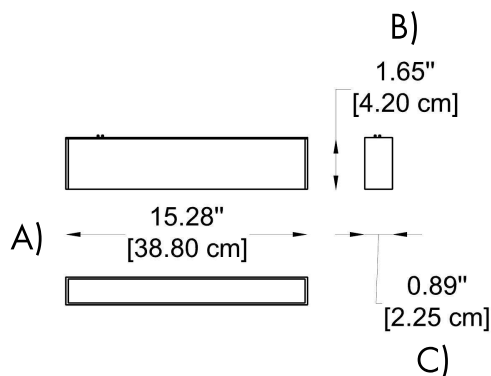
www.byiba.com

1 877-964-4646

PROJECT

SPEC TYPE

NOTES



LED



IP20



0LUTRON

CASAMBI



HOW TO ORDER:

Example:

CODE FOR TRACK: BY-BLMN-VND-S-CUS-BL-BR

CODE FOR TRACK HEAD: F20S-K30-C80-WL-DIM

CODE FOR ACCESSORIES: 45D-CC-OCR-OCR-TC-IC-WH

CODE:

F20S-K30-
C80-WL-
DIM

6

CHOOSE TRACK HEAD:

GENERAL INFORMATION

CODE -

-L40S

Dimensions:

A) Length - 14.28" (40 cm)

B) Height - 1.65" (4.2 cm)

C) Width - 0.89" (2.25 cm)

Material:

Aluminum

Light Source:

LED / 15W / 600 lm / 24Vdc

Lighting type:

Direct

Lighting distribution:

Symmetric

Optical type:

Diffuse

Dimmable:

Yes

Driver:

Remote

Driver type:

Electronic

Emergency:

Without

Insulation class:

III

CCT:

-K27 2700K

-K30 3000K

-K40 4000K

-K50 5000K

CRI:

-C80 80

-C90 90

Finish Options:

-WL - White (RAL9003)

-BL - Black (RAL9005)

-CUS Custom on request*

Dimming Options:

-DIM - 0-10V

-DL - DALI

-TR TRIAC

-LT - Lutron

-CS - Casambi

Operating temperature range - -4°F to +104°F

Maintenance of lumen - L80 - 50,000 hours at 77°F

WWW.BULLARDCOLLECTION.COM

TECHNICAL

OUTDOOR

DECORATIVE



WE WELCOME ALL CUSTOM ORDERS

CONTACT US:

sales@gordonbullard.com

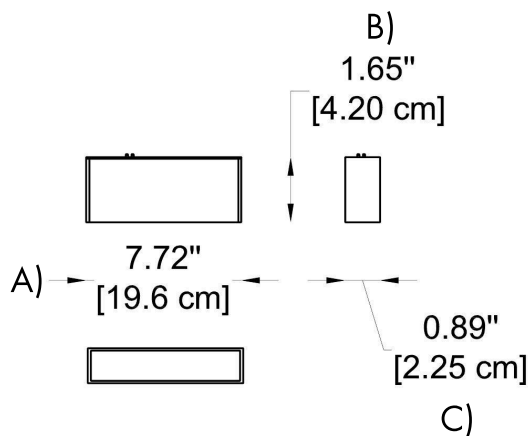
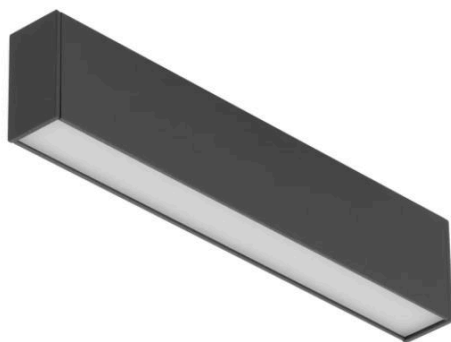
www.byiba.com

1 877-964-4646

PROJECT

SPEC TYPE

NOTES



HOW TO ORDER:

Example:

CODE FOR TRACK: BY-BLMN-VND-S-CUS-BL-BR

CODE FOR TRACK HEAD: F20S-K30-C80-WL-DIM

CODE FOR ACCESSORIES: 45D-CC-OCR-OCR-TC-IC-WH

CODE:

F20S-K30-
C80-WL-
DIM

6

CHOOSE TRACK HEAD:

GENERAL INFORMATION

CODE -

-L20S

Dimensions:

A) Length - 7.72" (19.6 cm)

B) Height - 1.65" (4.2 cm)

C) Width - 0.89" (2.25 cm)

Material:

Aluminum

Light Source:

LED / 8W / 262 lm / 24Vdc

Lighting type:

Direct

Lighting distribution:

Symmetric

Optical type:

Diffuse

Dimmable:

Yes

Driver:

Remote

Driver type:

Electronic

Emergency:

Without

Insulation class:

III

CCT:

-K27 2700K

-K30 3000K

-K40 4000K

-K50 5000K

CRI:

-C80 80

-C90 90

Finish Options:

-WL - White (RAL9003)

-BL - Black (RAL9005)

-CUS Custom on request*

Dimming Options:

-DIM - 0-10V

-DL - DALI

-TR TRIAC

-LT - Lutron

-CS - Casambi

Operating temperature range - -4°F to +104°F

Maintenance of lumen - L80 - 50,000 hours at 77°F

WWW.BULLARDCOLLECTION.COM

TECHNICAL

OUTDOOR

DECORATIVE



WE WELCOME ALL CUSTOM ORDERS

CONTACT US:

sales@gordonbullard.com

www.byiba.com

1 877-964-4646

PROJECT

SPEC TYPE

HOW TO ORDER (accessories):

Example:
CODE: 45D-CC-OCR-OCR-TC-IC-WH

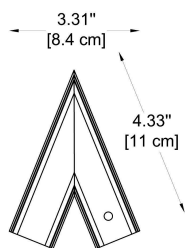
CODE:

45D-CC-
OCR-OCR-
TC-IC-WH

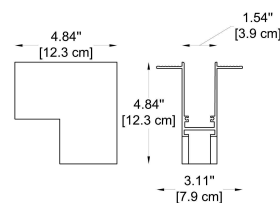
6

ACCESSORIES:

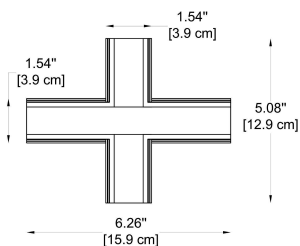
CODE - -45D
45D Corner



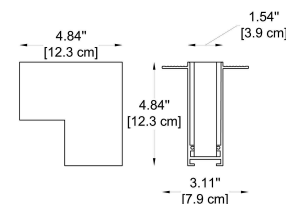
CODE - -OCR
Outer Corner-R



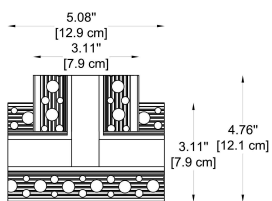
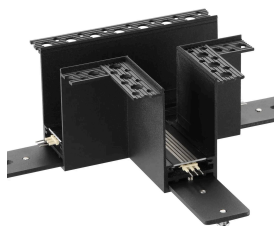
CODE - -CC
Cross Corner



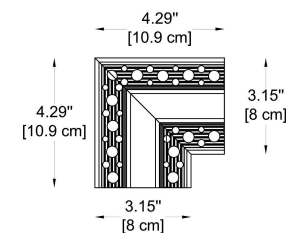
CODE - -ICR
Inner Corner-R



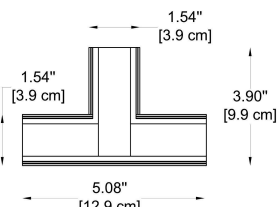
CODE - -TCR
T Corner-R



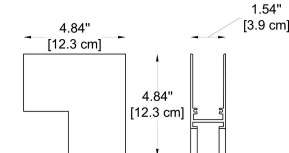
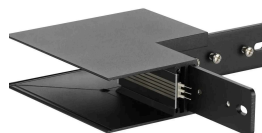
CODE - -OCR
L Corner-R



CODE - -TC
T Corner



CODE - -OC
Outer Corner



WWW.BULLARDCOLLECTION.COM

TECHNICAL

OUTDOOR

DECORATIVE



WE WELCOME ALL CUSTOM ORDERS

CONTACT US:

sales@gordonbullard.com
www.byiba.com
1 877-964-4646

PROJECT

SPEC TYPE

HOW TO ORDER:

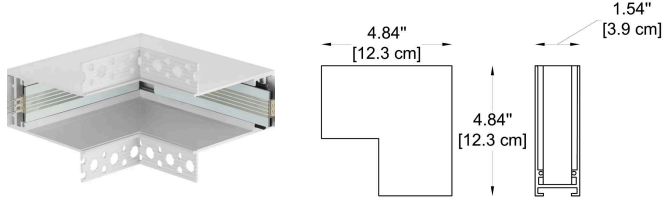
Example:
CODE: 45D-CC-OCR-OCR-TC-IC-WH

CODE:

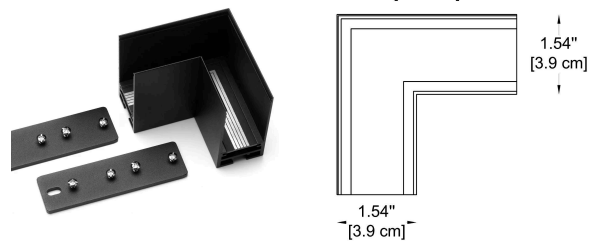
45D-CC-
OCR-OCR-
TC-IC-WH

6 ACCESSORIES:

CODE - -IC
Inner Corner



CODE - -LC
L Corner



7 ACCESSORIES FINISH OPTIONS:

- WL - White (RAL9003)
- BL - Black (RAL9005)
- CUS Custom on request*

WWW.BULLARDCOLLECTION.COM

TECHNICAL

OUTDOOR

DECORATIVE



WE WELCOME ALL CUSTOM ORDERS

CONTACT US:

sales@gordonbullard.com
www.byiba.com
1 877-964-4646