



# MILLI BIG

INSTALLATION TYPE:  
CEILING - MOUNTED / WALL



025.409 (REV05)

MADE IN ITALY

4193

4193B

4193C

4193D

4193E

4193F

4193G

4194

4194B

LED:

6.5W 350 mA

13W 700 mA

8W 350 mA

16W 700 mA

32W 700mA

III

IP 20/ IP44

C.C.

[m.A.]

NO!

X

1

Art.	4193	4193B	4193C	4193D	4193E	4193F	4193G	4194	4194B
4.9" x 8.1"	8.1" x 10.0"	8.1" x 10.0"	11.6" x 10.0"	11.6" x 10.0"	10.0" x 8.1"	11.6" x 10.0"	4.9" x 8.1"	8.1" x 10.0"	
0.59"	0.59"	0.59"	0.59"	0.59"	0.59"	0.59"	0.59"	0.59"	

Terminal block is not included.

For the installation qualified personnel may be required. (we recommend MAMMUT/FORBOX 0.0023in²)

3a for 4193- 4194

3b for 4193B-4193C-4193D-4193E-4194B

4

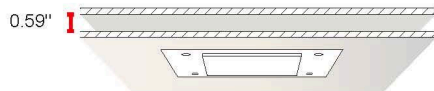
5

6

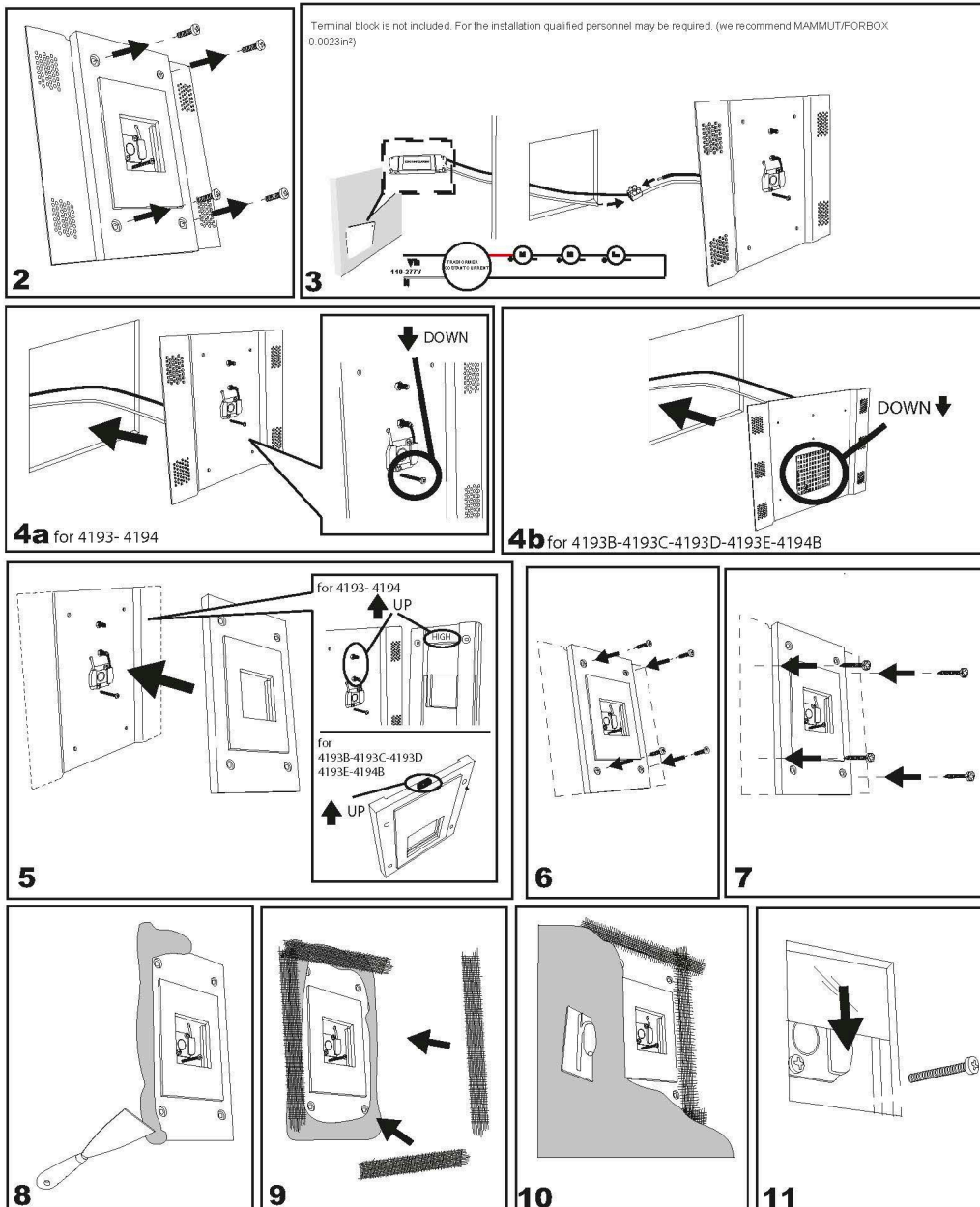
7

8

FOR INSTALLATION IN 0.59"



* Art.	Size	Depth
4193	4.9" x 8.1"	0.59"
4193B	8.1" x 10.0"	0.59"
4193C	8.1" x 10.0"	0.59"
4193D	11.6" x 10.0"	0.59"
4193E	11.6" x 10.0"	0.59"
4194	4.9" x 8.1"	0.59"
4194B	8.1" x 10.0"	0.59"





## IMPORTANT

To ensure equipment safety you must carefully follow the instructions below. This leaflet must be kept handy by personnel entrusted with all ordinary and extraordinary maintenance.

- Before any installation or maintenance operation on the bulb, make sure it is disconnected from power
- Fit the correct bulbs, according to the type and power indicated on the lamp data label.
- Make sure the lamp technical features are compatible with the use you are going to make of it.
- Should you have any doubt, refer to the dealer or ask an electrician.
- When connecting to the mains, follow the correct colour code for power cables: (N) blue, (L) brown or black and, only for class I equipment, (T) yellow/green.
- When lamps are to be fitted to the wall directly through their ceramic parts, fasten the fixing screws lightly, to avoid breaking the ceramic.
- To clean the lamp on the outside, use a soft cloth, possibly wet. Do not use solvents or abrasive products. No liquid must get in contact with the lamp interior parts.
- Do not touch the equipment with dirty hands.



= Class I equipment, must be connected to an earth terminal.



= Double insulated lamp, does not need earthing.



= Electrical equipment in class III, electrical safety guaranteed by low voltage tension, does not require grounding



= Minimum distance to be observed from all lit up objects.



= Replace immediately the safety glass, if damaged, with the original part.



= The lamp uses low pressure bulbs, and needs no protection glass.



= The equipment at the end of its life must be collected separately from other waste.