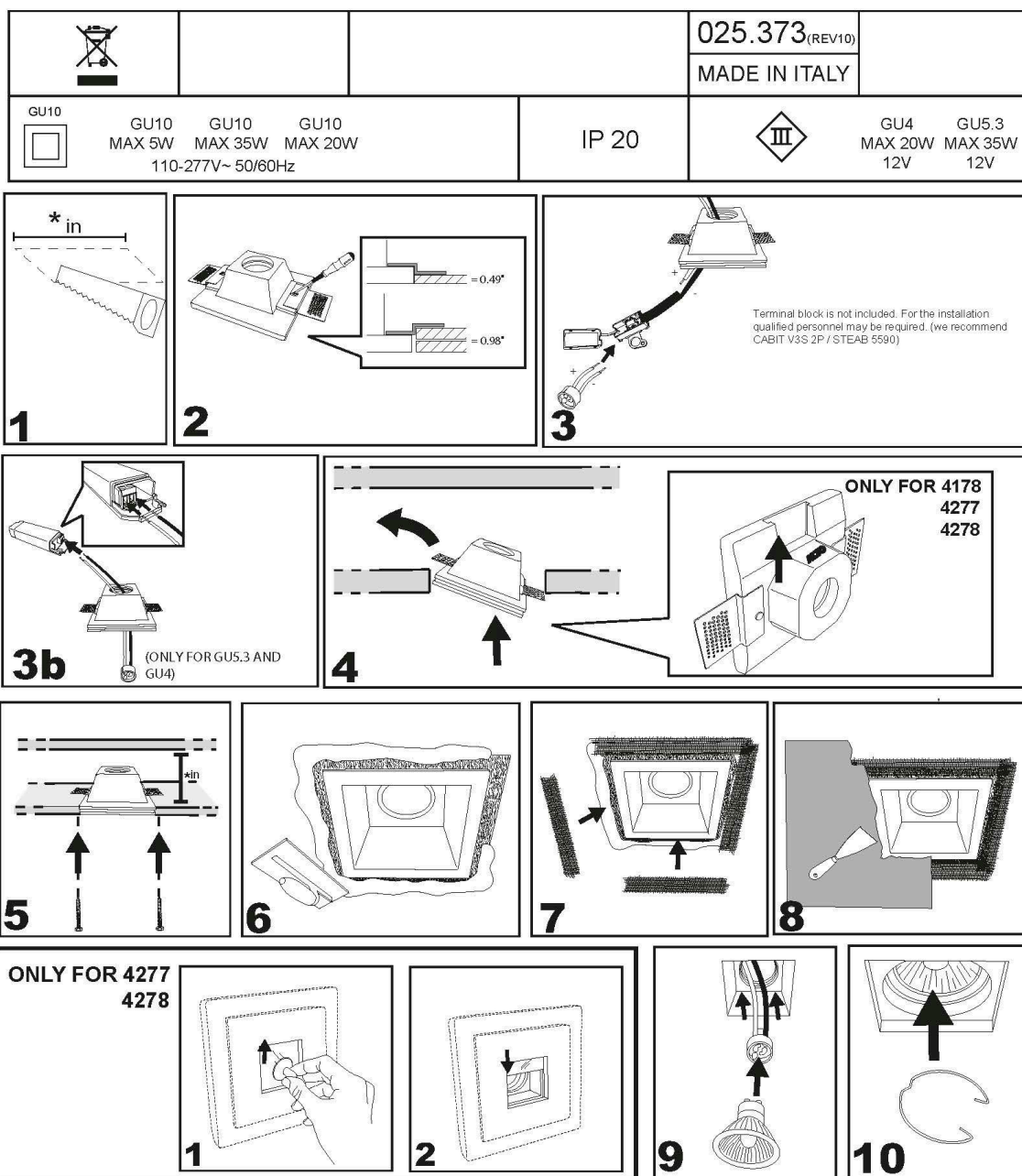



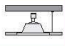



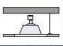
IDRA

INSTALLATION TYPE:
CEILING-MOUNTED / WALL



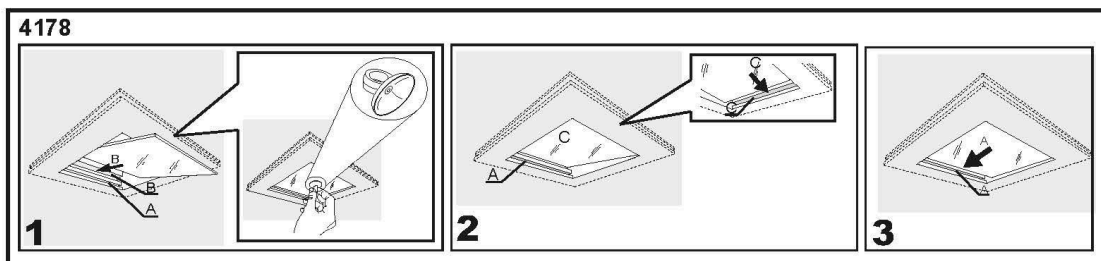
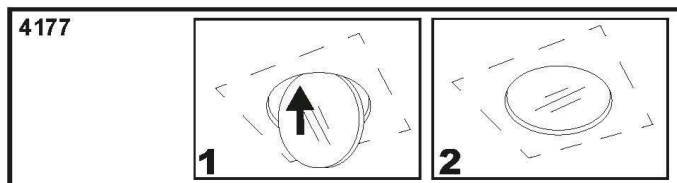


Art.		
2446	12.4" x 9.65"	1.18"
2417	4.33" x 14.37"	3.15"
4170	6.89" x 8.86"	2.95"
4174	6.10" x 6.10"	5.12"
4175	7.48" x 7.48"	4.33"
4176	4.92" x 4.92"	3.35"
4176B	7.87" x 4.92"	3.35"
4177	6.10" x 6.10"	5.12"
4178	6.10" x 6.10"	4.53"
4179	6.10" x 6.10"	3.74"
4180	6.10" x 6.10"	4.33"
4180A	9.25" x 6.10"	4.53"
4180B	11.61" x 6.10"	4.53"
4181	4.92" x 4.92"	3.15"
4183	7.82" x 7.82"	4.92"

Art.		
4184	6.50" x 7.68"	1.38"
4186	6.50" x 7.68"	1.38"
4199	4.92" x 6.30"	2.56"
4210	11.42" x 7.09"	4.72"
4215	8.07" x 8.07"	3.74"
4216	8.07" x 8.07"	3.74"
4275	4.92" x 4.92"	3.15"
4276	4.92" x 4.92"	3.15"
4277	4.92" x 4.92"	3.15"
4278	4.92" x 4.92"	3.15"
4280	4.92" x 4.92"	3.15"
4281	4.92" x 4.92"	2.36"
8919	7.87" x 7.87"	2.95"
8935G	9.65" x 9.65"	1.18"

Art.		
8935H	9.84" x 9.84"	1.18"
8935I	12.20" x 12.20"	1.18"
8935L	7.87" x 7.87"	1.77"
8935N	7.87" x 7.87"	1.77"
2446B	13.39" x 16.14"	1.18"

VETRO / GLASS:





IMPORTANT

To ensure equipment safety you must carefully follow the instructions below. This leaflet must be kept handy by personnel entrusted with all ordinary and extraordinary maintenance.

- Before any installation or maintenance operation on the bulb, make sure it is disconnected from power
- Fit the correct bulbs, according to the type and power indicated on the lamp data label.
- Make sure the lamp technical features are compatible with the use you are going to make of it.
- Should you have any doubt, refer to the dealer or ask an electrician.
- When connecting to the mains, follow the correct colour code for power cables: (N) blue, (L) brown or black and, only for class I equipment, (T) yellow/green.
- When lamps are to be fitted to the wall directly through their ceramic parts, fasten the fixing screws lightly, to avoid breaking the ceramic.
- To clean the lamp on the outside, use a soft cloth, possibly wet. Do not use solvents or abrasive products. No liquid must get in contact with the lamp interior parts.
- Do not touch the equipment with dirty hands.



= Class I equipment, must be connected to an earth terminal.



= Double insulated lamp, does not need earthing.



= Electrical equipment in class III, electrical safety guaranteed by low voltage tension, does not require grounding



= Minimum distance to be observed from all lit up objects.



= Replace immediately the safety glass, if damaged, with the original part.



= The lamp uses low pressure bulbs, and needs no protection glass.



= The equipment at the end of its life must be collected separately from other waste.