



BRUNO (down-lights)

BY-BRN-DL

PROJECT

SPEC TYPE

NOTES



GENERAL INFORMATION:

This collection of recessed brass downlights is crafted with solid brass housings and designed for high-performance, glare-reducing lighting. Available in multiple wattages (3W–10W) and beam angles (15°, 24°, 38°), each model offers precision optical control and deep anti-glare architecture for visual comfort. Compatible with DALI or 0–10V dimming, these fixtures support color temperatures of 2700K, 3000K, or 4000K with high CRI for true color rendering. Ideal for upscale residential and hospitality applications where both aesthetics and lighting quality matter.

MATERIAL:

Brass

FINISHING:

Brass Finish

LIGHTING:

LED

INPUT VOLTAGE:

110-277V

DRIVER POSITION:

Remote

BEAM ANGLE:

15°/24°/38°

IP RATING:

IP 54

OPERATING TEMPERATURE RANGE:

–4.0°F to 104.0°F

APPLIANCE CLASS:

II

WWW.BULLARDCOLLECTION.COM

- TECHNICAL
- OUTDOOR
- DECORATIVE



WE WELCOME ALL CUSTOM ORDERS

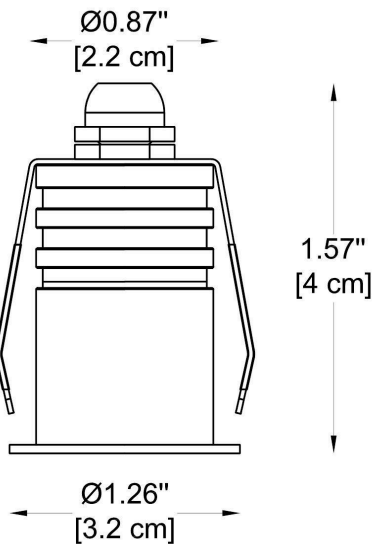
CONTACT US:

sales@gordonbullard.com
www.byiba.com
 1 877-964-4646

PROJECT

SPEC TYPE

NOTES



LED



IP54

CASAMBI

LUTRON

HOW TO ORDER:

Example:

CODE: BY-BRN-DL-B1-K27-B10-DIM

CODE:

BY-BRN-DL-
B1-K27-B10-
DIM

1

MODELS:

GENERAL INFORMATION

CODE -

-B1

Dimensions:

A) Diameter - Ø: 1.26" (3.2 cm)

B) Height - H: 1.57" (4 cm)

Light Source:

LED / 3W / 110-277V

CCT:

-K27

2700K



-K30

3000K



-K40

4000K



Beam Angle:

-B15

15° = 201.35 lm



-B24

24° = 164.33 lm



-B38

38° = 211.10 lm



Dimming:

-NON

Non-Dimmable



-DIM

0-10V



-DL

Dali



-LU

Lutron



-CA

Casambi



IP rating:

IP 54

Installation:

Recessed

Warranty:

3 years

Operating temperature range - -4.0°F to 104.0°F

Maintenance of lumen - L80 - 50 000 hours at 25 °C

WWW.BULLARDCOLLECTION.COM

TECHNICAL

OUTDOOR

DECORATIVE



WE WELCOME ALL CUSTOM ORDERS

CONTACT US:

sales@gordonbullard.com

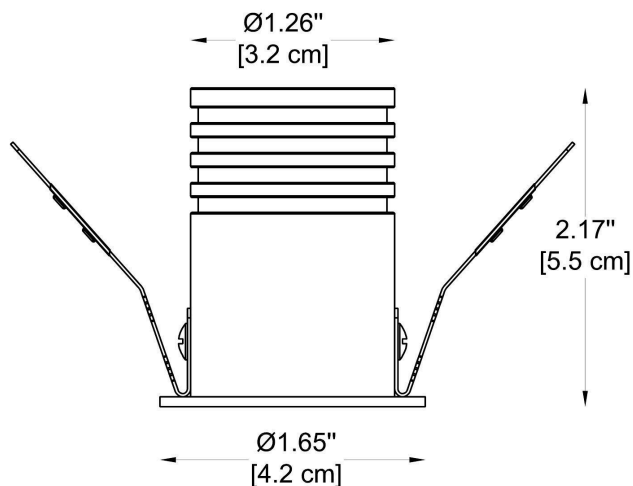
www.byiba.com

1 877-964-4646

PROJECT

SPEC TYPE

NOTES



LED



IP54

CASAMBI

LUTRON

HOW TO ORDER:

Example:

CODE: BY-BRN-DL-B1-K27-B10-DIM

CODE:

BY-BRN-DL-
B1-K27-B10-
DIM

1

MODELS:

GENERAL INFORMATION

CODE - **-B2**

Dimensions: A) Diameter - Ø: 1.65" (4.2 cm)
B) Height - H: 2.17" (5.5 cm)

Light Source: LED / 3W / 110-277V

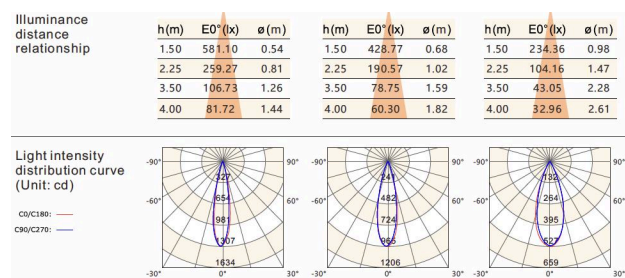
CCT: **-K27** 2700K ☐
-K30 3000K ☐
-K40 4000K ☐

Beam Angle & Lumens: **-B15** 15° = 201.35 lm ☐
-B24 24° = 219.14 lm ☐
-B38 38° = 211.10 lm ☐

Dimming: **-NON** Non-Dimmable ☐
-DIM 0-10V ☐
-DL Dali ☐
-LU Lutron ☐
-CA Casambi ☐

IP rating: IP 54
Installation: Recessed
Warranty: 3 years

Operating temperature range - -4.0°F to 104.0°F
Maintenance of lumen - L80 - 50 000 hours at 25 °C



WWW.BULLARDCOLLECTION.COM

TECHNICAL

OUTDOOR

DECORATIVE



WE WELCOME ALL CUSTOM ORDERS

CONTACT US:

sales@gordonbullard.com

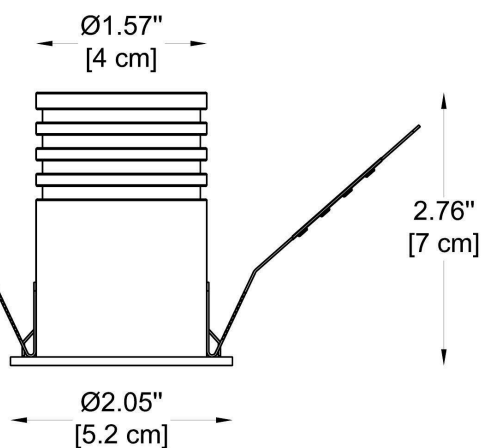
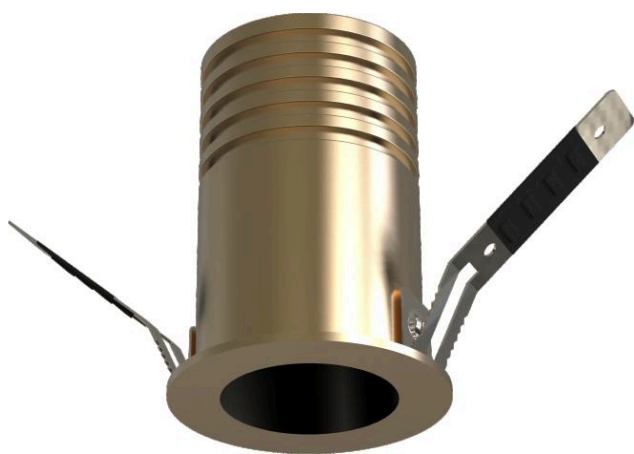
www.byiba.com

1 877-964-4646

PROJECT

SPEC TYPE

NOTES



LED



IP54

CASAMBI

LUTRON

HOW TO ORDER:

Example:

CODE: BY-BRN-DL-B1-K27-B10-DIM

CODE:

BY-BRN-DL-
B1-K27-B10-
DIM

1 MODELS:

GENERAL INFORMATION

CODE - **-B3**

Dimensions: A) Diameter - Ø: 2.05" (5.2 cm)
B) Height - H: 2.76" (7 cm)

Light Source: LED / 8W / 110-277V

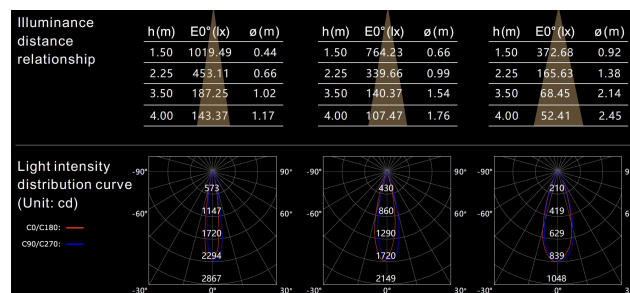
CCT: **-K27** 2700K ☐
-K30 3000K ☐
-K40 4000K ☐

Beam Angle: **-B15** 15° = 265.72 lm ☐
-B24 24° = 349.96 lm ☐
-B38 38° = 282.79 lm ☐

Dimming: **-NON** Non-Dimmable ☐
-DIM 0-10V ☐
-DL Dali ☐
-LU Lutron ☐
-CA Casambi ☐

IP rating: IP 54
Installation: Recessed
Warranty: 3 years

Operating temperature range - -4.0°F to 104.0°F
Maintenance of lumen - L80 - 50 000 hours at 25 °C



WWW.BULLARDCOLLECTION.COM

TECHNICAL

OUTDOOR

DECORATIVE



WE WELCOME ALL CUSTOM ORDERS

CONTACT US:

sales@gordonbullard.com

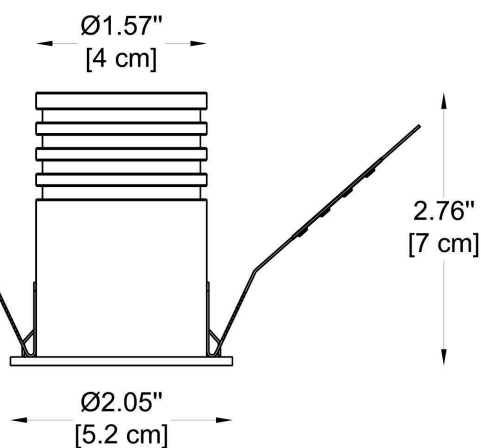
www.byiba.com

1 877-964-4646

PROJECT

SPEC TYPE

NOTES



LED



IP54

CASAMBI

LUTRON

HOW TO ORDER:

Example:

CODE: BY-BRN-DL-B1-K27-B10-DIM

CODE:

BY-BRN-DL-
B1-K27-B10-
DIM

1 MODELS:

GENERAL INFORMATION

CODE - **-B3**
 Dimensions: A) Diameter - Ø: 2.05" (5.2 cm)
 B) Height - H: 2.76" (7 cm)

Light Source: LED / 8W / 110-277V

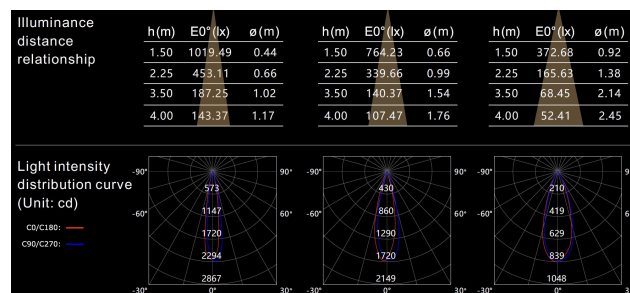
CCT: **-K27** 2700K ☐
-K30 3000K ☐
-K40 4000K ☐

Beam Angle: **-B15** 15° = 265.72 lm ☐
-B24 24° = 349.96 lm ☐
-B38 38° = 282.79 lm ☐

Dimming: **-NON** Non-Dimmable ☐
-DIM 0-10V ☐
-DL Dali ☐
-LU Lutron ☐
-CA Casambi ☐

IP rating: IP 54
 Installation: Recessed
 Warranty: 3 years

Operating temperature range - -4.0°F to 104.0°F
 Maintenance of lumen - L80 - 50 000 hours at 25 °C



WWW.BULLARDCOLLECTION.COM

TECHNICAL

OUTDOOR

DECORATIVE



WE WELCOME ALL CUSTOM ORDERS

CONTACT US:

sales@gordonbullard.com

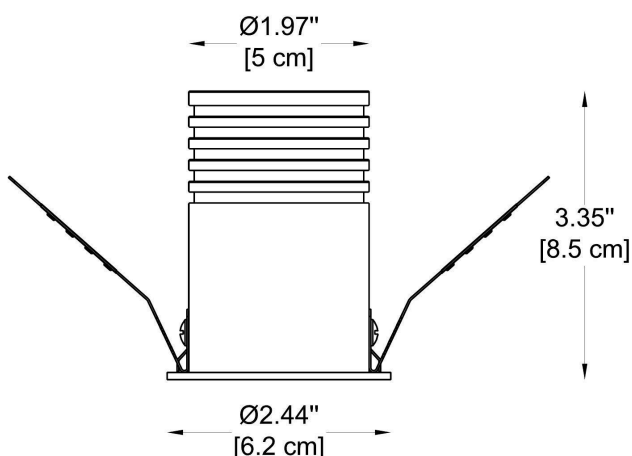
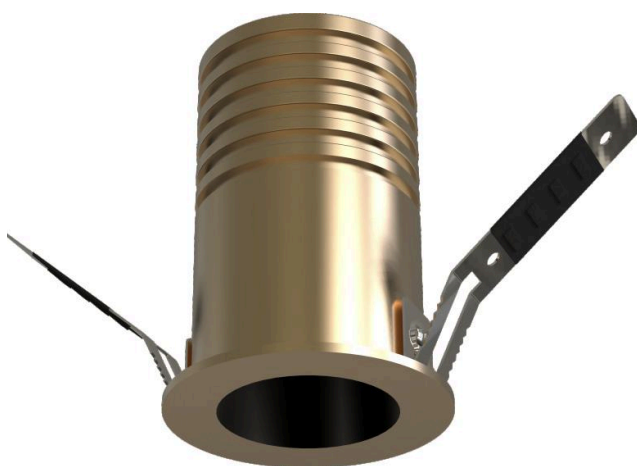
www.byiba.com

1 877-964-4646

PROJECT

SPEC TYPE

NOTES



LED



IP54

CASAMBI

LUTRON

HOW TO ORDER:

Example:

CODE: BY-BRN-DL-B1-K27-B10-DIM

CODE:

BY-BRN-DL-
B1-K27-B10-
DIM

1 MODELS:

GENERAL INFORMATION

CODE - **-B4**

Dimensions: A) Diameter - Ø: 2.44" (6.2 cm)
B) Height - H: 3.35" (8.5 cm)

Light Source: LED / 10W / 110-277V

CCT: **-K27** 2700K ☐
-K30 3000K ☐
-K40 4000K ☐

Beam Angle: **-B15** 15° = 453.91 lm ☐
-B24 24° = 498.52lm ☐
-B38 38° = 368.29 lm ☐

Dimming: **-NON** Non-Dimmable ☐
-DIM 0-10V ☐
-DL Dali ☐
-LU Lutron ☐
-CA Casambi ☐

IP rating: IP 54
Installation: Recessed
Warranty: 3 years

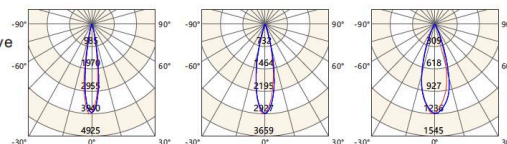
Operating temperature range - -4.0°F to 104.0°F
Maintenance of lumen - L80 - 50 000 hours at 25 °C

Illuminance	h(m)	E0°(lx)	ø(m)	h(m)	E0°(lx)	ø(m)	h(m)	E0°(lx)	ø(m)
distance	1.50	1751.18	0.43	1.50	1301.01	0.57	1.50	547.04	0.83
relationship	2.25	778.30	0.65	2.25	578.23	0.86	2.25	244.21	1.24
	3.50	321.65	1.01	3.50	238.96	1.34	3.50	100.92	1.93
	4.00	246.26	1.16	4.00	182.96	1.53	4.00	77.27	2.21

Light intensity
distribution curve
Unit: cd

C0/C180:

C90/C270:



WWW.BULLARDCOLLECTION.COM

TECHNICAL

OUTDOOR

DECORATIVE



WE WELCOME ALL CUSTOM ORDERS

CONTACT US:

sales@gordonbullard.com

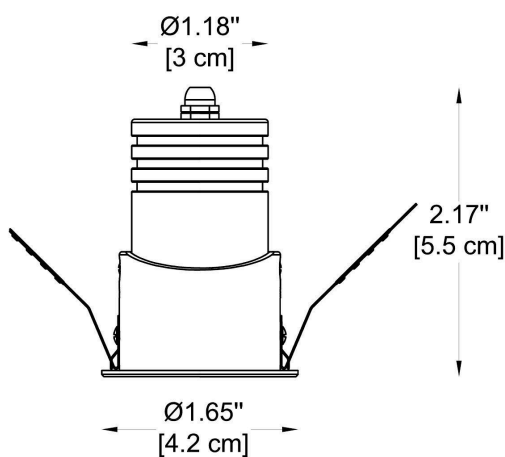
www.byiba.com

1 877-964-4646

PROJECT

SPEC TYPE

NOTES



LED



IP54

CASAMBI

LUTRON

HOW TO ORDER:

Example:

CODE: BY-BRN-DL-B1-K27-B10-DIM

CODE:

BY-BRN-DL-
B1-K27-B10-
DIM

1

MODELS:

GENERAL INFORMATION

CODE - **-B5** (Adjustable 20°)
Dimensions: A) Diameter - Ø: 1.65" (4.2 cm)
B) Height - H: 2.17" (5.5 cm)

Light Source: LED / 3W / 110-277V

CCT: **-K27** 2700K ☐
-K30 3000K ☐
-K40 4000K ☐

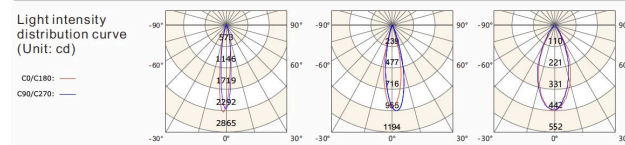
Beam Angle: **-B15** 15° = 201.35 lm ☐
-B24 24° = 164.33 lm ☐
-B38 38° = 211.10 lm ☐

Dimming: **-NON** Non-Dimmable ☐
-DIM 0-10V ☐
-DL Dali ☐
-LU Lutron ☐
-CA Casambi ☐

IP rating: IP 54
Installation: Recessed
Warranty: 3 years

Operating temperature range - -4.0°F to 104.0°F
Maintenance of lumen - L80 - 50 000 hours at 25 °C

Illuminance distance relationship	h(m)	E0°(lx)	ø(m)	h(m)	E0°(lx)	ø(m)	h(m)	E0°(lx)	ø(m)
	1.50	581.10	0.54	1.50	424.43	0.62	1.50	234.36	0.98
	2.25	259.27	0.81	2.25	188.63	0.94	2.25	104.16	1.47
	3.50	106.73	1.26	3.50	77.96	1.45	3.50	43.05	2.28
	4.00	81.72	1.44	4.00	59.68	1.66	4.00	32.96	2.61



WWW.BULLARDCOLLECTION.COM

TECHNICAL

OUTDOOR

DECORATIVE



WE WELCOME ALL CUSTOM ORDERS

CONTACT US:

sales@gordonbullard.com

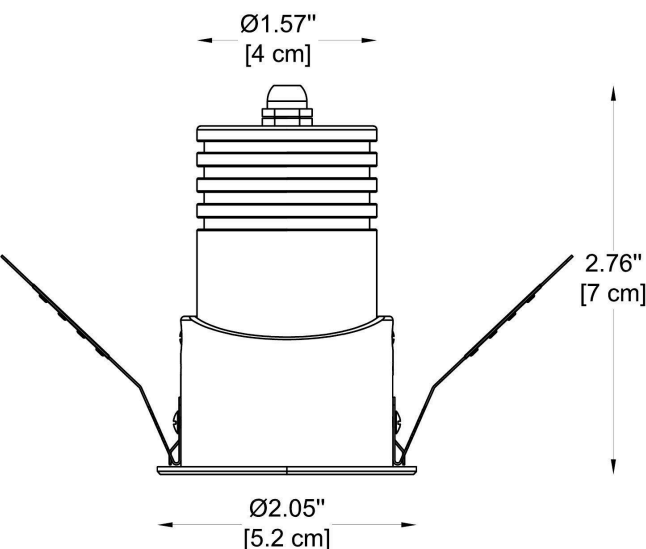
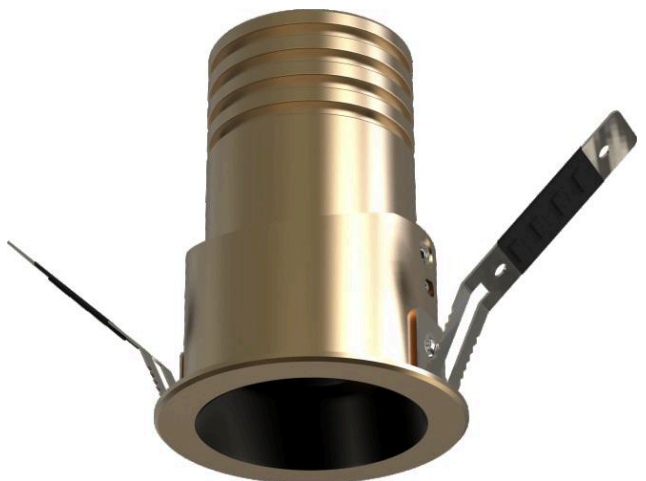
www.byiba.com

1 877-964-4646

PROJECT

SPEC TYPE

NOTES



LED



IP54

CASAMBI

LUTRON

HOW TO ORDER:

Example:

CODE: BY-BRN-DL-B1-K27-B10-DIM

CODE:

BY-BRN-DL-
B1-K27-B10-
DIM

1 MODELS:

GENERAL INFORMATION

CODE - **-B6** (Adjustable 20°)
Dimensions: A) Diameter - Ø: 2.05" (5.2 cm)
B) Height - H: 2.76" (7 cm)

Light Source: LED / 5W / 110-277V

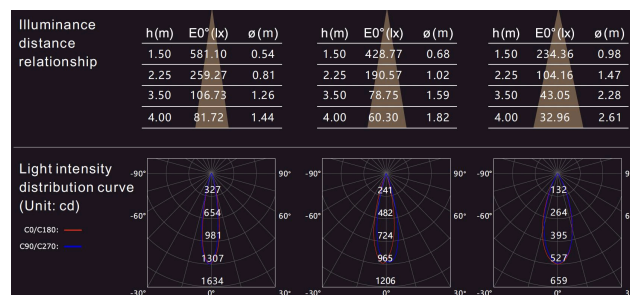
CCT: **-K27** 2700K ☐
-K30 3000K ☐
-K40 4000K ☐

Beam Angle: **-B15** 15° = 201.35 lm ☐
-B24 24° = 219.14 lm ☐
-B38 38° = 211.10 lm ☐

Dimming: **-NON** Non-Dimmable ☐
-DIM 0-10V ☐
-DL Dali ☐
-LU Lutron ☐
-CA Casambi ☐

IP rating: IP 54
Installation: Recessed
Warranty: 3 years

Operating temperature range - -4.0°F to 104.0°F
Maintenance of lumen - L80 - 50 000 hours at 25 °C



WWW.BULLARDCOLLECTION.COM

TECHNICAL

OUTDOOR

DECORATIVE



WE WELCOME ALL CUSTOM ORDERS

CONTACT US:

sales@gordonbullard.com

www.byiba.com

1 877-964-4646

NOTES

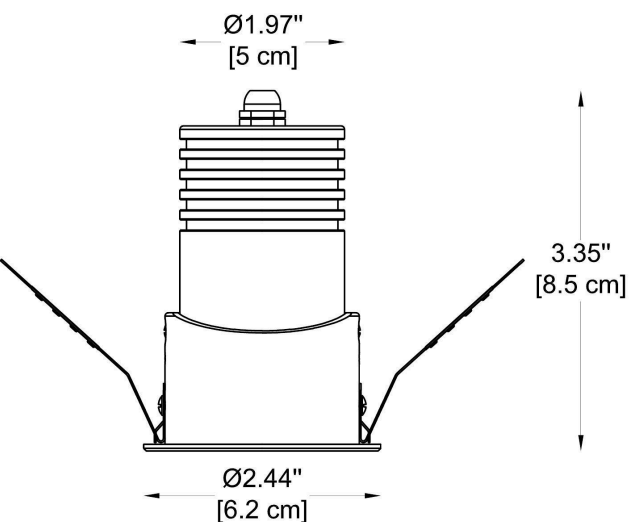


Figure 10 consists of two rows of data. The top row, titled 'Illuminance distance relationship', shows three tables of data for different lighting conditions. The bottom row, titled 'Light intensity distribution curve (Unit: cd)', shows three corresponding light intensity distribution curves.

Illuminance distance relationship

h (m)	E_0^* (lx)	ϕ (m)
1.50	1019.49	0.44
2.25	453.11	0.66
3.50	187.25	1.02
4.00	143.37	1.17

h (m)	E_0^* (lx)	ϕ (m)
1.50	764.23	0.66
2.25	339.66	0.99
3.50	140.37	1.54
4.00	107.47	1.76

h (m)	E_0^* (lx)	ϕ (m)
1.50	372.68	0.92
2.25	165.63	1.38
3.50	68.45	2.14
4.00	52.41	2.45

Light intensity distribution curve (Unit: cd)

The three light intensity distribution curves show the distribution of light intensity (cd) at different heights (h) and distances (phi). The curves are labeled with their respective peak values: 573, 430, and 210. The curves are also labeled with their respective heights (h) and distances (phi) at the base of the curve.

Legend:

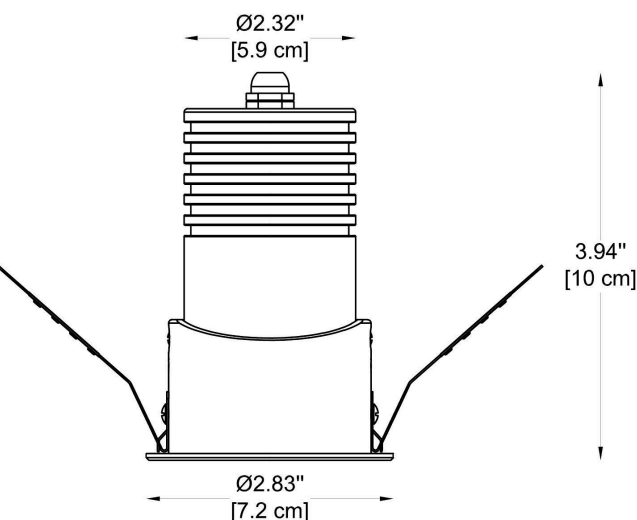
- CE/C180: Red line
- CE/C170: Blue line

Due to the dynamic nature of lighting products and the associated technologies, luminaire data on all specification sheets is subject to change at the discretion of Gordon Bullard LLC and associated companies.
©2025 All Rights Reserved Updated 06/17/2025

PROJECT

SPEC TYPE

NOTES



LED



IP54

CASAMBI

LUTRON

HOW TO ORDER:

Example:

CODE: BY-BRN-DL-B1-K27-B10-DIM

CODE:

BY-BRN-DL-
B1-K27-B10-
DIM

1 MODELS:

GENERAL INFORMATION

CODE - **-B8** (Adjustable 20°)
Dimensions: A) Diameter - Ø: 2.83" (7.2 cm)
B) Height - H: 3.94" (10 cm)

Light Source: LED / 10W / 110-277V

CCT: **-K27** 2700K ☐
-K30 3000K ☐
-K40 4000K ☐

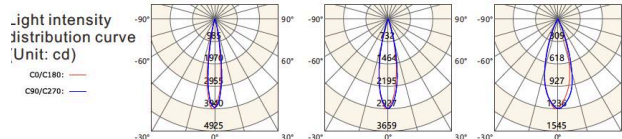
Beam Angle: **-B15** 15° = 453.91 lm ☐
-B24 24° = 498.52lm ☐
-B38 38° = 368.29 lm ☐

Dimming: **-NON** Non-Dimmable ☐
-DIM 0-10V ☐
-DL Dali ☐
-LU Lutron ☐
-CA Casambi ☐

IP rating: IP 54
Installation: Recessed
Warranty: 3 years

Operating temperature range - -4.0°F to 104.0°F
Maintenance of lumen - L80 - 50 000 hours at 25 °C

Illuminance	h(m)	E0°(lx)	ø(m)	h(m)	E0°(lx)	ø(m)	h(m)	E0°(lx)	ø(m)
distance	1.50	1751.18	0.43	1.50	1301.01	0.57	1.50	547.04	0.83
relationship	2.25	778.30	0.65	2.25	578.23	0.86	2.25	244.21	1.24
	3.50	321.65	1.01	3.50	238.96	1.34	3.50	100.92	1.93
	4.00	246.26	1.16	4.00	182.96	1.53	4.00	77.27	2.21



WWW.BULLARDCOLLECTION.COM

TECHNICAL

OUTDOOR

DECORATIVE



WE WELCOME ALL CUSTOM ORDERS

CONTACT US:

sales@gordonbullard.com

www.byiba.com

1 877-964-4646



BY-BRN-DL

PROJECT

SPEC TYPE

HOW TO ORDER:

Example:
CODE: BY-BRN-DL-B1-K27-B10-DIM

CODE:

BY-BRN-DL-
B1-K27-B10-
DIM

INSTALLATION INSTRUCTION:

WWW.BULLARDCOLLECTION.COM

TECHNICAL

OUTDOOR

DECORATIVE



WE WELCOME ALL CUSTOM ORDERS

CONTACT US:

sales@gordonbullard.com
www.byiba.com
1 877-964-4646