

SILK  
(wall)

BY-2436-PL

PROJECT

SPEC TYPE

NOTES



GENERAL INFORMATION:

The BYIBA model 2436 "SILK" is a sophisticated recessed wall lamp made from CRISTALY®, a durable and paintable material exclusive to BYIBA. Its minimalist design features a central protrusion that allows LED light to diffuse both upward and downward, creating an elegant ambiance. Equipped with a 9.5W LED source, it offers color temperature options of 2700K, 3000K, or 4000K, with a high CRI of 85 for superior light quality. Designed for seamless wall integration, it is available with optional housing boxes for brickwork installations, making it a versatile choice for modern interiors.

MATERIAL:

CRISTALY®

FINISHING:

White / Paintable

LIGHTING:

LED

INPUT VOLTAGE:

110-277

IP RATING:

20

DRIVER POSITION:

Remote

INSULATION CLASS:

III

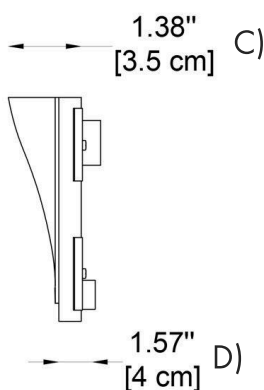
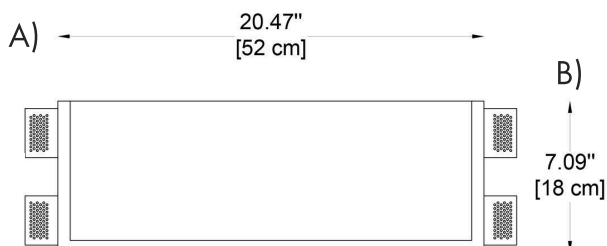
CRI:

CRI 85

PROJECT

SPEC TYPE

NOTES



### HOW TO ORDER:

Example:  
CODE: BY-2436-PL-K27-DIM

CODE:

BY-2436-PL-  
K27-DIM

### 1 DIMENSIONS:

A) Length -	L:	20.47" (52 cm)
B) Height -	H:	7.1" (7.1 cm)
C) Projection from the wall - PR:		1.38" (3.5 cm)
D) Recessed Depth -	P:	1.57" (4 cm)

### 2 LIGHT SOURCE:

LED / 9,5W / 110-277V

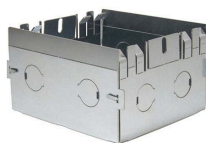
### 3 CCT and LUMENS:

-K27	2700K = 800 lm
-K30	3000K = 850 lm
-K40	4000K = 900 lm

### 4 DIMMING OPTIONS:

-DIM	0-10V
-DALI	DALI
-LT	Lutron
-CS	Casambi
-WF	WI-FI
-NON	Non-Dimmable

### 5 ACCESSORIES:



Housing Box  
20.67" x 7.28" x 1.97"  
21.85" x 8.46" x 2.36" - Hole

[WWW.BULLARDCOLLECTION.COM](http://WWW.BULLARDCOLLECTION.COM)

TECHNICAL

OUTDOOR

DECORATIVE



WE WELCOME ALL CUSTOM ORDERS

CONTACT US:

[sales@gordonbullard.com](mailto:sales@gordonbullard.com)  
[www.byiba.com](http://www.byiba.com)  
1 877-964-4646